

## Smad5 (Phospho-Ser463/Ser465) Rabbit mAb

Catalog No: #14208

Package Size: #14208-1 50ul #14208-2 100ul

Orders: [order@signalwayantibody.com](mailto:order@signalwayantibody.com)Support: [tech@signalwayantibody.com](mailto:tech@signalwayantibody.com)

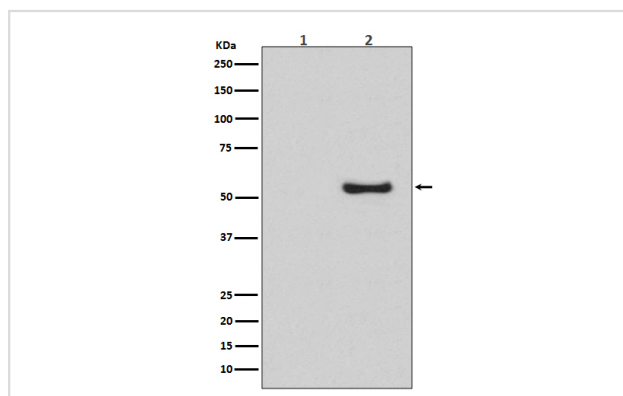
## Description

Product Name	Smad5 (Phospho-Ser463/Ser465) Rabbit mAb
Host Species	Rabbit
Clonality	Monoclonal
Isotype	Rabbit IgG
Purification	Affinity-chromatography
Applications	WB ICC/IF
Species Reactivity	Human
Specificity	Phospho-Smad5 (S463/S465) Antibody detects endogenous levels of Phospho-Smad5 (S463/S465)
Immunogen Description	A synthesized peptide derived from human Smad5
Other Names	Mothers against decapentaplegic homolog 5; MAD homolog 5; Mothers against DPP homolog 5; JV5-1; SMAD family member 5; SMAD 5; Smad5; hSmad5; SMAD5; MADH5;
Accession No.	Uniprot:Q99717
Uniprot	Q99717
Calculated MW	52kDa
Formulation	Rabbit IgG in phosphate buffered saline , pH 7.4, 150mM NaCl, 0.02% sodium azide and 50% glycerol.
Storage	Store at +4ℳ C short term. Store at -20ℳ C long term. Avoid freeze / thaw cycle.

## Application Details

WB:1:500~1:1000 ICC:1:50~1:200

## Images



Western blot analysis of Phospho-Smad5 (S463/S465) expression in (1) HeLa cell lysate; (2) HeLa cell treated with BMP-4 lysate.

## Product Description

Transcriptional modulator activated by BMP (bone morphogenetic proteins) type 1 receptor kinase. SMAD5 is a receptor-regulated SMAD (R-SMAD).

---

Note: This product is for in vitro research use only