

MEK1 (Phospho-Ser298) Rabbit mAb

Catalog No: #14210

Package Size: #14210-1 50ul #14210-2 100ul

Orders: order@signalwayantibody.com

Support: tech@signalwayantibody.com

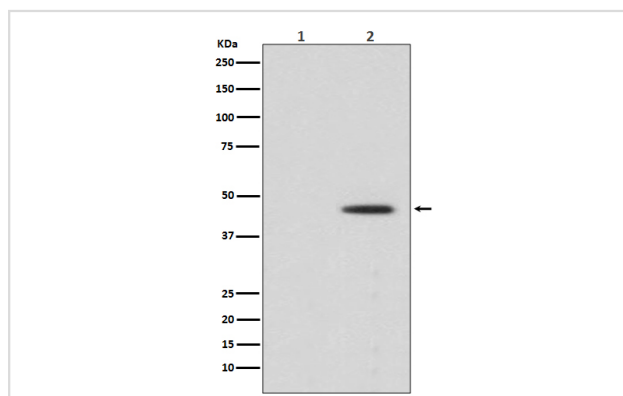
Description

Product Name	MEK1 (Phospho-Ser298) Rabbit mAb
Host Species	Rabbit
Clonality	Monoclonal
Isotype	Rabbit IgG
Purification	Affinity-chromatography
Applications	WB IHC ICC/IF
Species Reactivity	Human Mouse Rat
Specificity	Phospho-MEK1 (S298) Antibody detects endogenous levels of Phospho-MEK1 (S298)
Immunogen Description	A synthesized peptide derived from human MEK1
Other Names	Dual specificity mitogen-activated protein kinase kinase 1; MAP kinase kinase 1; MAPKK 1; MKK1; ERK activator kinase 1; MAPK/ERK kinase 1; MEK 1; MAP2K1; MEK-1; PRKMK1;
Accession No.	Uniprot:Q02750
Uniprot	Q02750
Calculated MW	45kDa
Formulation	Rabbit IgG in phosphate buffered saline , pH 7.4, 150mM NaCl, 0.02% sodium azide and 50% glycerol.
Storage	Store at +4ℳ C short term. Store at -20ℳ C long term. Avoid freeze / thaw cycle.

Application Details

WB:1:1000~1:2000IHC:1:50~1:200ICC/IF:1:50~1:200

Images



Western blot analysis of Phospho-MEK1 (S298) expression in (1) HeLa cell treated with LP lysate; (2) HeLa cell lysate.

Product Description

Activation of MEK1 and MEK2 occurs through phosphorylation of two serine residues at positions 217 and 221, located in the activation loop of subdomain VIII, by Raf-like molecules. Catalyzes the concomitant phosphorylation of a threonine and a tyrosine residue in a Thr-Glu-Tyr sequence located in MAP kinases. Activates ERK1 and ERK2 MAP kinases.

Note: This product is for in vitro research use only