

JunD (Phospho-Ser255) Rabbit mAb

Catalog No: #14219

Package Size: #14219-1 50ul #14219-2 100ul

Orders: order@signalwayantibody.com

Support: tech@signalwayantibody.com

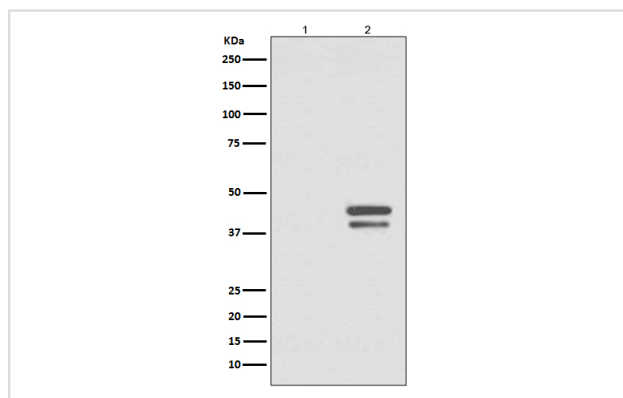
Description

Product Name	JunD (Phospho-Ser255) Rabbit mAb
Host Species	Rabbit
Clonality	Monoclonal
Isotype	Rabbit IgG
Purification	Affinity-chromatography
Applications	WB IP
Species Reactivity	Human Mouse Rat
Specificity	Phospho-JunD (S255) Antibody detects endogenous levels of Phospho-JunD (S255)
Immunogen Description	A synthesized peptide derived from human JunD
Other Names	Activator protein 1; AP 1; Jun D; jun D proto oncogene; Jund; JunD FL isoform; Transcription factor jun D;
Accession No.	Uniprot:P17535
Uniprot	P17535
Calculated MW	38,42kDa
Formulation	Rabbit IgG in phosphate buffered saline , pH 7.4, 150mM NaCl, 0.02% sodium azide and 50% glycerol.
Storage	Store at +4ℳ C short term. Store at -20ℳ C long term. Avoid freeze / thaw cycle.

Application Details

WB:1:1000~1:2000IP:1:50

Images



Western blot analysis of Phospho-JunD (S255) expression in (1) HeLa cell lysate treated with Alkaline Phosphatase; (2) HeLa cell lysate.

Product Description

JunD, along with closely related family members c-Jun and JunB, is a transcription factor that can activate or repress a wide array of target genes. JunD transcriptional activity is modulated by phosphorylation in response to cellular stress via the c-Jun N-terminal Kinase (JNK)/Stress-Activated Protein Kinase (SAPK) family of protein kinases. JunD activity can also be modulated by the MAPK pathway in response to growth factors.

Note: This product is for in vitro research use only