

SHIP (Phospho-Tyr1020) Rabbit mAb

Catalog No: #14220

Package Size: #14220-1 50ul #14220-2 100ul

Orders: order@signalwayantibody.comSupport: tech@signalwayantibody.com

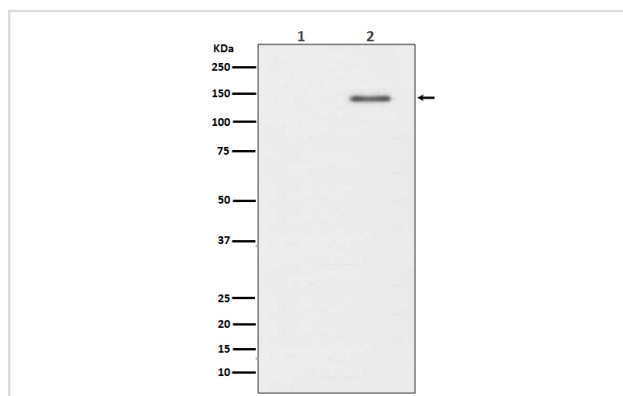
Description

Product Name	SHIP (Phospho-Tyr1020) Rabbit mAb
Host Species	Rabbit
Clonality	Monoclonal
Isotype	Rabbit IgG
Purification	Affinity-chromatography
Applications	WB ICC/IF IP
Species Reactivity	Human
Specificity	Phospho-SHIP (Y1020) Antibody detects endogenous levels of Phospho-SHIP (Y1020)
Immunogen Description	A synthesized peptide derived from human SHIP
Other Names	Phosphatidylinositol 3,4,5-trisphosphate 5-phosphatase 1; Inositol polyphosphate-5-phosphatase of 145 kDa; SIP-145; SH2 domain-containing inositol 5'-phosphatase 1; SHIP-1; p150Ship; hp51CN; INPP5D; SHIP;
Accession No.	Uniprot:Q92835
Uniprot	Q92835
Calculated MW	145kDa
Formulation	Rabbit IgG in phosphate buffered saline , pH 7.4, 150mM NaCl, 0.02% sodium azide and 50% glycerol.
Storage	Store at +4ℳ C short term. Store at -20ℳ C long term. Avoid freeze / thaw cycle.

Application Details

WB:1:1000~1:2000|ICC/IF:1:50~1:200|IP:1:20

Images



Western blot analysis of Phospho-SHIP (Y1020) expression in (1) Raji cell lysate; (2) Raji cell treated with pervanadate lysate.

Product Description

SH2-containing inositol phosphatase 1 (SHIP1) is a hematopoietic phosphatase that hydrolyzes phosphatidylinositol-3,4,5-triphosphate to phosphatidylinositol-3,4-bisphosphate. SHIP1 is a cytosolic phosphatase with an SH2 domain in its amino terminus and two NPXY Shc binding motifs in its carboxy terminus. Involved in the control of cell-cell junctions, CD32a signaling in neutrophils and modulation of EGF-induced phospholipase C

activity.

Note: This product is for in vitro research use only