

## STAT1 (Phospho-Tyr701) Rabbit mAb

Catalog No: #14223

Package Size: #14223-1 50ul #14223-2 100ul

Orders: order@signalwayantibody.com

Support: tech@signalwayantibody.com

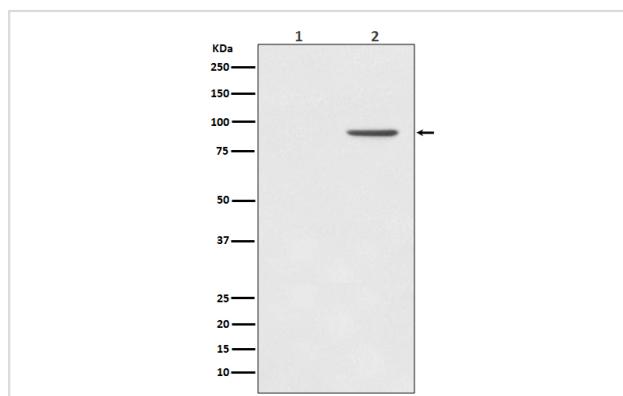
## Description

Product Name	STAT1 (Phospho-Tyr701) Rabbit mAb
Host Species	Rabbit
Clonality	Monoclonal
Isotype	Rabbit IgG
Purification	Affinity-chromatography
Applications	WB
Species Reactivity	Human
Specificity	Phospho-STAT1 (Y701) Antibody detects endogenous levels of Phospho-STAT1 (Y701)
Immunogen Description	A synthesized peptide derived from human STAT1
Other Names	CANDF7; ISGF 3; Signal transducer and activator of transcription 1; Stat1; STAT91; Transcription factor ISGF-3 components p91/p84;
Accession No.	Uniprot:P42224
Uniprot	P42224
Calculated MW	87kDa
Formulation	Rabbit IgG in phosphate buffered saline , pH 7.4, 150mM NaCl, 0.02% sodium azide and 50% glycerol.
Storage	Store at +4ℳ C short term. Store at -20ℳ C long term. Avoid freeze / thaw cycle.

## Application Details

WB:1:1000~1:2000

## Images



Western blot analysis of Phospho-STAT1 (Y701) expression in (1) A431 cell lysate; (2) A431 lysate cell treated with EGF.

## Product Description

The Stat1 transcription factor is activated in response to a large number of ligands and is essential for responsiveness to IFN- $\alpha$  and IFN- $\gamma$ . Stat1 protein exists as a pair of isoforms, Stat1 $\alpha$  (91 kDa) and the splice variant Stat1 $\beta$  (84 kDa). In most cells, both isoforms are activated by IFN- $\alpha$ , but only Stat1 $\alpha$  is activated by IFN- $\gamma$ . The inappropriate activation of Stat1 occurs in many tumors.

---

Note: This product is for in vitro research use only