

Raf1 (Phospho-Ser621) Rabbit mAb

Catalog No: #14227

Package Size: #14227-1 50ul #14227-2 100ul

Orders: order@signalwayantibody.com

Support: tech@signalwayantibody.com

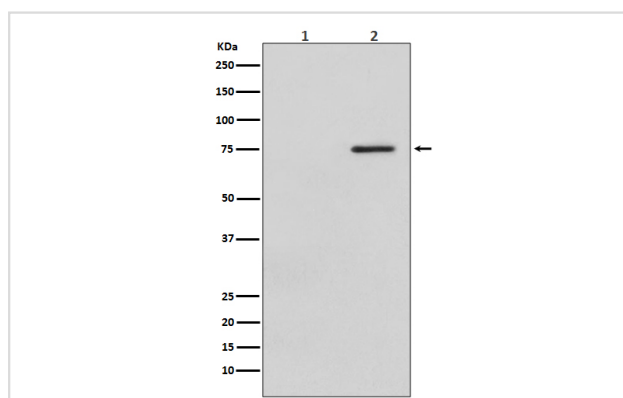
Description

Product Name	Raf1 (Phospho-Ser621) Rabbit mAb
Host Species	Rabbit
Clonality	Monoclonal
Isotype	Rabbit IgG
Purification	Affinity-chromatography
Applications	WB
Species Reactivity	Human Mouse Rat
Specificity	Phospho-Raf1 (S621) Antibody detects endogenous levels of total Phospho-Raf1 (S621)
Immunogen Description	A synthesized peptide derived from human Phospho-Raf1 (S621)
Other Names	C-Raf; CRAF; Protein kinase raf 1; RAF1; Raf proto-oncogene serine/threonine-protein kinase; kinase Raf1;
Accession No.	Uniprot:P04049
Uniprot	P04049
Calculated MW	73kDa
Formulation	Rabbit IgG in phosphate buffered saline , pH 7.4, 150mM NaCl, 0.02% sodium azide and 50% glycerol.
Storage	Store at +4Λ C short term. Store at -20Λ C long term. Avoid freeze / thaw cycle.

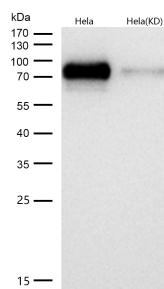
Application Details

WB:1:500~1:2000

Images



Western blot analysis of Phospho-Raf1 (S621) expression in (1) HeLa cell lysate treated with LP; (2) HeLa cell lysate.



All lanes use the Antibody at 1:1K dilution for 1 hour at room temperature.

Product Description

Activated ERKs are pleiotropic effectors of cell physiology and play an important role in the control of gene expression involved in the cell division cycle, apoptosis, cell differentiation and cell migration.

Note: This product is for in vitro research use only