

Rac1/Cdc42 (Phospho-Ser71) Rabbit mAb

Catalog No: #14229

Package Size: #14229-1 50ul #14229-2 100ul

Orders: order@signalwayantibody.com

Support: tech@signalwayantibody.com

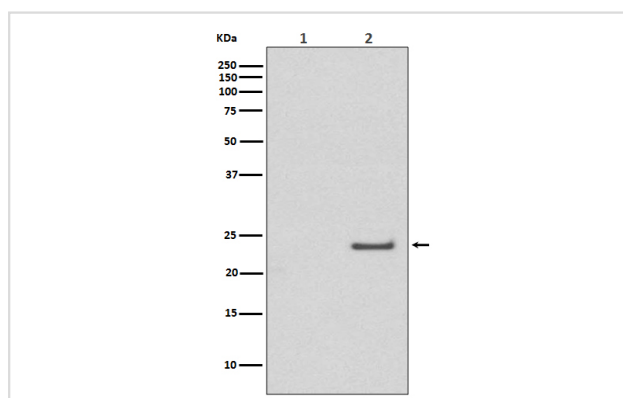
Description

| | |
|-----------------------|--|
| Product Name | Rac1/Cdc42 (Phospho-Ser71) Rabbit mAb |
| Host Species | Rabbit |
| Clonality | Monoclonal |
| Isotype | Rabbit IgG |
| Purification | Affinity-chromatography |
| Applications | WB |
| Species Reactivity | Human |
| Specificity | Phospho-Rac1/Cdc42 (Ser71) Antibody detects endogenous levels of total Phospho-Rac1/Cdc42 (Ser71) |
| Immunogen Description | A synthesized peptide derived from human Phospho-Rac1/Cdc42 (Ser71) |
| Other Names | CDC42; CDC42Hs; G25K; TKS; MIG5; Ras like protein TC25; |
| Accession No. | Uniprot:P60953/P63000 |
| Uniprot | P60953/P63000 |
| Calculated MW | 24kDa |
| Formulation | Rabbit IgG in phosphate buffered saline , pH 7.4, 150mM NaCl, 0.02% sodium azide and 50% glycerol. |
| Storage | Store at +4ℳ C short term. Store at -20ℳ C long term. Avoid freeze / thaw cycle. |

Application Details

WB:1:500~1:1000

Images



Western blot analysis of Phospho-Rac1/Cdc42 (Ser71) expression in (1) A431 cell lysate treated with LP; (2) A431 cell lysate.

Product Description

Rac and Cdc42 are members of the Rho-GTPase family. In mammals, Rac exists as three isoforms, Rac1, Rac2 and Rac3, which are highly similar in sequence. Rac1 and Cdc42, the most widely studied of this group, are ubiquitously expressed. Rac2 is expressed in cells of hematopoietic origin, and Rac3, while highly expressed in brain, is also found in many other tissues. Rac and Cdc42 play key signaling roles in cytoskeletal reorganization, membrane trafficking, transcriptional regulation, cell growth and development.

Note: This product is for in vitro research use only