

## Raf1 (Phospho-Ser43) Rabbit mAb

Catalog No: #14232

Package Size: #14232-1 50ul #14232-2 100ul

Orders: order@signalwayantibody.com

Support: tech@signalwayantibody.com

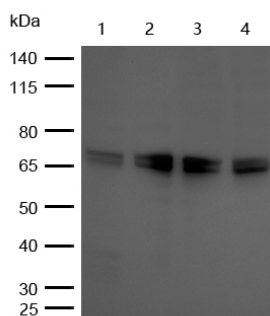
## Description

Product Name	Raf1 (Phospho-Ser43) Rabbit mAb
Host Species	Rabbit
Clonality	Monoclonal
Isotype	Rabbit IgG
Purification	Affinity-chromatography
Applications	WB
Species Reactivity	Human;Mouse;Rat
Specificity	Phospho-Raf1 (S43) Antibody detects endogenous levels of total Phospho-Raf1 (S43)
Immunogen Description	A synthesized peptide derived from human Phospho-Raf1 (S43)
Other Names	C-Raf; CRAF; Protein kinase raf 1; RAF1; Raf proto-oncogene serine/threonine-protein kinase; kinase Raf1;
Accession No.	Uniprot:P04049
Uniprot	P04049
Calculated MW	73 kDa
SDS-PAGE MW	65-75 kDa
Formulation	Rabbit IgG in phosphate buffered saline , pH 7.4, 150mM NaCl, 0.02% sodium azide and 50% glycerol.
Storage	Store at +4 $\Lambda$ C short term. Store at -20 $\Lambda$ C long term. Avoid freeze / thaw cycle.

## Application Details

WB:1:500~1:1000

## Images



All lanes : Phospho-c Raf (S43) Rabbit mAb at 1/1k dilution

Lane 1 : MCF7 whole cell lysates

Lane 2 : Hela whole cell lysates

Lane 3 : HepG2 whole cell lysates

Lane 4 : 293T whole cell lysates

Lysates/proteins at 20  $\mu$ g per lane.

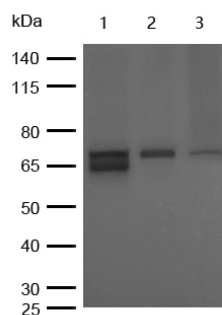
Secondary

All lanes : Goat Anti-Rabbit IgG H&amp;L (HRP) at 1/20000 dilution

Predicted band size: 73 kDa

Observed band size: 65-75 kDa

Exposure time: 10 seconds



All lanes : Phospho-c Raf (S43) Rabbit mAb at 1/1k dilution

Lane 1 : 3T3 whole cell lysates

Lane 2 : Mouse Heart lysates

Lane 3 : Rat Brain lysates

Lysates/proteins at 20 µg per lane.

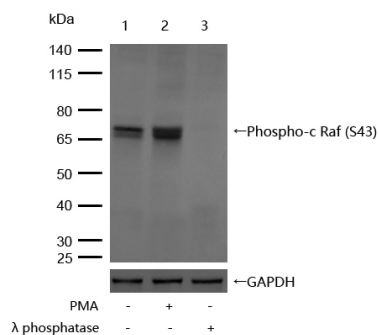
Secondary

All lanes : Goat Anti-Rabbit IgG H&L (HRP) at 1/20000 dilution

Predicted band size: 73 kDa

Observed band size: 65-75 kDa

Exposure time: 10 seconds



All lanes : Phospho-c Raf (S43) Rabbit mAb at 1/1k dilution

Lane 1 : MCF7 whole cell lysates

Lane 2 : MCF7 treated with 200nM PMA for 30min whole cell lysates

Lane 3 : MCF7 treated with Lambda Protein Phosphatase for 30min whole cell lysates

Lysates/proteins at 20 µg per lane.

Secondary

All lanes : Goat Anti-Rabbit IgG H&L (HRP) at 1/20000 dilution

Predicted band size: 73 kDa

Observed band size: 65-75 kDa

Exposure time: 7 seconds

## Product Description

Raf-1 is a MAP kinase kinase kinase (MAP3K) which functions downstream of the Ras family of membrane associated GTPases to which it binds directly. Once activated Raf-1 can phosphorylate to activate the dual specificity protein kinases MEK1 and MEK2 which in turn phosphorylate to activate the serine/threonine specific protein kinases ERK1 and ERK2. Activated ERKs are pleiotropic effectors of cell physiology and play an important role in the control of gene expression involved in the cell division cycle, apoptosis, cell differentiation and cell migration.

Note: This product is for in vitro research use only