

GSK3 $\alpha/\beta$ (Phospho-Tyr216/Tyr279) Rabbit mAb

Catalog No: #14236

Package Size: #14236-1 50ul #14236-2 100ul

Orders: [order@signalwayantibody.com](mailto:order@signalwayantibody.com)Support: [tech@signalwayantibody.com](mailto:tech@signalwayantibody.com)

## Description

Product Name	GSK3 $\alpha/\beta$ (Phospho-Tyr216/Tyr279) Rabbit mAb
Host Species	Rabbit
Clonality	Monoclonal
Isotype	Rabbit IgG
Purification	Affinity-chromatography
Applications	WB IHC ICC/IF IP
Species Reactivity	Human Mouse Rat
Specificity	Phospho-GSK3 (alpha + beta)(Y216 + Y279) Antibody detects endogenous levels of total Phospho-GSK3 (alpha + beta)(Y216 + Y279)
Immunogen Description	A synthesized peptide derived from human Phospho-GSK3 (alpha + beta)(Y216 + Y279)
Other Names	Glycogen synthase kinase-3 alpha; GSK-3 alpha; GSK3A
Accession No.	Uniprot:P49840
Uniprot	P49840
Calculated MW	51kDa/46kDa
Formulation	Rabbit IgG in phosphate buffered saline , pH 7.4, 150mM NaCl, 0.02% sodium azide and 50% glycerol.
Storage	Store at +4 $\Lambda$ C short term. Store at -20 $\Lambda$ C long term. Avoid freeze / thaw cycle.

## Application Details

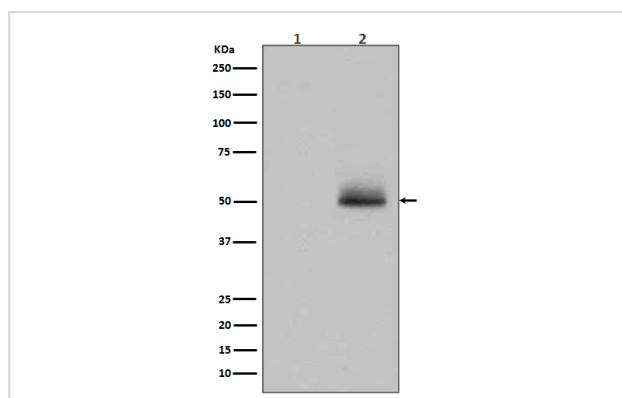
WB:1:500~1:2000

IHC:1:50~1:200

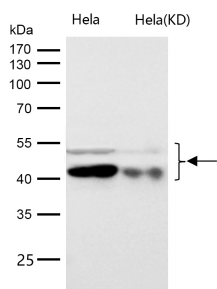
ICC/IF:1:50~1:200

IP:1:50

## Images



Western blot analysis of GSK3 alpha/ beta phosphorylation expression in 293 cell lysate treated with AP.



All lanes use the Antibody at 1:1K dilution for 1 hour at room temperature.

## Product Description

GSK3A a proline-directed protein kinase of the GSK family. Implicated in the control of several regulatory proteins including glycogen synthase, Myb, and c-Jun. GSK3 and GSK3 have similar functions. GSK3 phosphorylates tau, the principal component of neurofibrillary tangles in Alzheimer disease and is required for maximal production of amyloid plaque peptides by secretase.

Note: This product is for in vitro research use only