

GSK3 β (Phospho-Ser9) Rabbit mAb

Catalog No: #14237

Package Size: #14237-1 50ul #14237-2 100ul

Orders: order@signalwayantibody.com

Support: tech@signalwayantibody.com

Description

Product Name	GSK3 β (Phospho-Ser9) Rabbit mAb
Host Species	Rabbit
Clonality	Monoclonal
Isotype	Rabbit IgG
Purification	Affinity-chromatography
Applications	WB;IHC;IF
Species Reactivity	Human
Specificity	Phospho-GSK3 beta (Ser9) Antibody detects endogenous levels of total Phospho-GSK3 beta (Ser9)
Immunogen Description	A synthesized peptide derived from human Phospho-GSK3 beta (Ser9)
Other Names	glycogen synthase kinase 3 beta; GSK-3 beta; GSK3B; GSK3beta isoform;
Accession No.	Uniprot:P49841
Uniprot	P49841
Calculated MW	47 kDa
SDS-PAGE MW	46 kDa
Formulation	Rabbit IgG in phosphate buffered saline , pH 7.4, 150mM NaCl, 0.02% sodium azide and 50% glycerol.
Storage	Store at +4 Λ C short term. Store at -20 Λ C long term. Avoid freeze / thaw cycle.

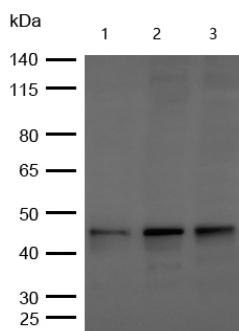
Application Details

WB:1:5000~1:10000

IHC:1:50~1:200

ICC/IF:1:50~1:200

Images



All lanes : Phospho-GSK3 beta (S9) Rabbit mAb at 1/1k dilution

Lane 1 : Hela whole cell lysates

Lane 2 : 293T whole cell lysates

Lane 3 : MCF7 whole cell lysates

Lysates/proteins at 20 μ g per lane.

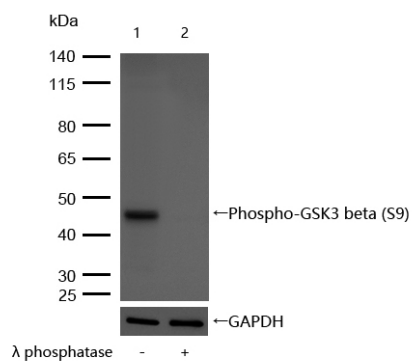
Secondary

All lanes : Goat Anti-Rabbit IgG H&L (HRP) at 1/20000 dilution

Predicted band size: 47 kDa

Observed band size: 46 kDa

Exposure time: 7 seconds



All lanes : Phospho-GSK3 beta (S9) Rabbit mAb at 1/1k dilution

Lane 1 : 293T whole cell lysates

Lane 2 : 293T treated with Lambda Protein Phosphatase for 30min whole cell lysates

Lysates/proteins at 20 µg per lane.

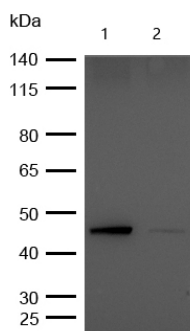
Secondary

All lanes : Goat Anti-Rabbit IgG H&L (HRP) at 1/20000 dilution

Predicted band size: 47 kDa

Observed band size: 46 kDa

Exposure time: 3 seconds

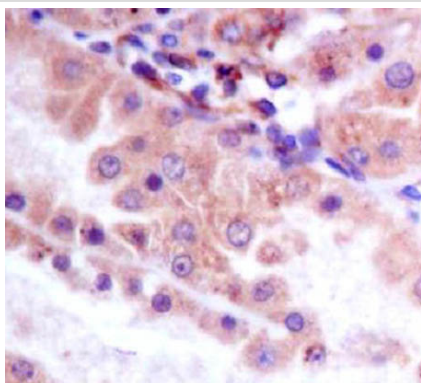


All lanes : Phospho-GSK3 beta (S9) Rabbit mAb at 1/1k dilution

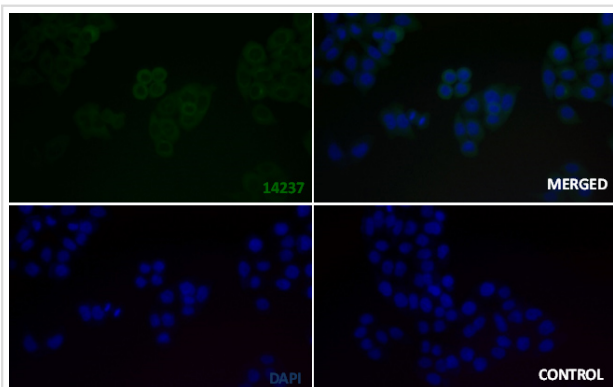
Lane 1 : Wild-type HeLa cell lysate

Lane 2 : Phospho-GSK3 beta (S9) knockdown HeLa cell lysate

Lysates/proteins at 20 µg per lane.



Formalin-fixed, paraffin-embedded human kidney tissue stained for Phospho-GSK3 beta (S9) using 14237 at 1/100 dilution in immunohistochemical analysis.



Immunocytochemistry/ Immunofluorescence p-GSK3 beta (S9) antibody (14237)

14237 staining p-GSK3 beta (S9) in the HeLa cell line by ICC/IF. Cells were fixed with 4% Paraformaldehyde permeabilized with 0.1% Triton X-100.

Samples were incubated with 14237 at a working dilution of 1/100. The secondary antibody was Alexa FluorB 488 goat anti rabbit, used at a dilution of 1/500.

The negative control is shown in bottom right hand panel - for the negative control, purified 14237 was used at a dilution of 1/100 followed by Alexa FluorB 647 goat anti- rabbit antibody at a dilution of 1/500.

Nuclei were counterstained with DAPI.

Product Description

GSK3B a proline-directed protein kinase of the GSK family. Phosphorylates and inactivates glycogen synthase. Participates in the Wnt signaling pathway. Involved in energy metabolism, neuronal cell development, and body pattern formation.

Note: This product is for in vitro research use only