

MLKL (Phospho-Ser358) Rabbit mAb

Catalog No: #14251

Package Size: #14251-1 50ul #14251-2 100ul

Orders: order@signalwayantibody.com

Support: tech@signalwayantibody.com

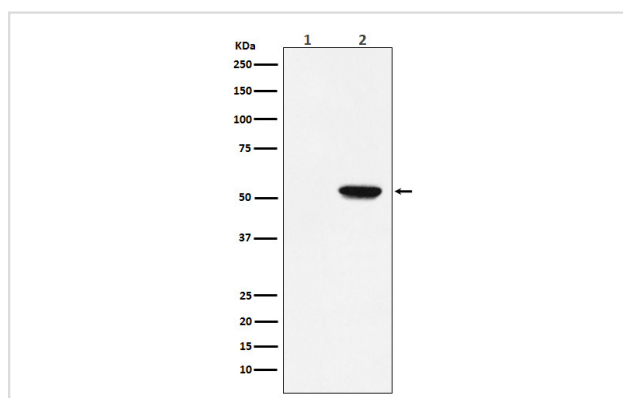
Description

Product Name	MLKL (Phospho-Ser358) Rabbit mAb
Host Species	Rabbit
Clonality	Monoclonal
Isotype	Rabbit IgG
Purification	Affinity-chromatography
Applications	WB IHC
Species Reactivity	Human
Specificity	Phospho-MLKL (S358) Antibody detects endogenous levels of total Phospho-MLKL (S358)
Immunogen Description	A synthesized peptide derived from human Phospho-MLKL (S358)
Other Names	hMLKL; Mlkl;
Accession No.	Uniprot:Q8NB16
Uniprot	Q8NB16
Calculated MW	54kDa
Formulation	Rabbit IgG in phosphate buffered saline , pH 7.4, 150mM NaCl, 0.02% sodium azide and 50% glycerol.
Storage	Store at +4ℳ C short term. Store at -20ℳ C long term. Avoid freeze / thaw cycle.

Application Details

WB:1:500~1:2000IHC:1:50~1:200

Images



Western blot analysis of Phospho-MLKL (S358) expression in (1) HT-29 cell lysate; (2) HT-29 cell lysate treated with TNF alpha+ Smac mimetic+ z-VAD.

Product Description

Pseudokinase that plays a key role in TNF-induced necroptosis, a programmed cell death process. Activated following phosphorylation by RIPK3, leading to homotrimerization, localization to the plasma membrane and execution of programmed necrosis characterized by calcium influx and plasma membrane damage. Does not have protein kinase activity.

Note: This product is for in vitro research use only