

## ErbB3 (Phospho-Tyr1222) Rabbit mAb

Catalog No: #14258

Package Size: #14258-1 50ul #14258-2 100ul

Orders: [order@signalwayantibody.com](mailto:order@signalwayantibody.com)Support: [tech@signalwayantibody.com](mailto:tech@signalwayantibody.com)

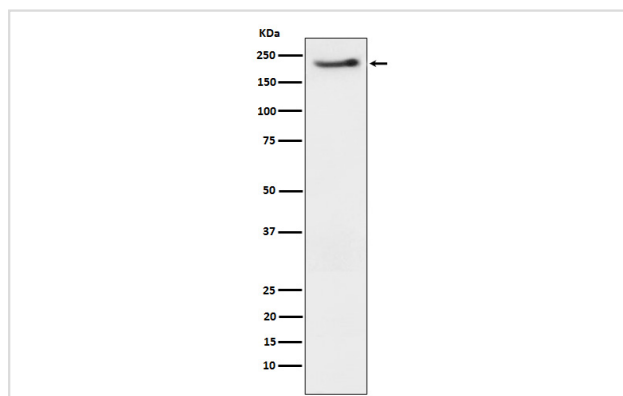
## Description

Product Name	ErbB3 (Phospho-Tyr1222) Rabbit mAb
Host Species	Rabbit
Clonality	Monoclonal
Isotype	Rabbit IgG
Purification	Affinity-chromatography
Applications	WB ICC/IF IP
Species Reactivity	Human
Specificity	Phospho-ErbB3 (Y1222) Antibody detects endogenous levels of total Phospho-ErbB3 (Y1222)
Immunogen Description	A synthesized peptide derived from human ErbB3
Other Names	ERBB3; HER3; LCCS2; p180 ErbB3; p45 sErbB3; p85 sErbB3;
Accession No.	Uniprot:P21860
Uniprot	P21860
Calculated MW	185kDa
Formulation	Rabbit IgG in phosphate buffered saline , pH 7.4, 150mM NaCl, 0.02% sodium azide and 50% glycerol.
Storage	Store at +4 $\Lambda$ C short term. Store at -20 $\Lambda$ C long term. Avoid freeze / thaw cycle.

## Application Details

WB:1:500~1:2000ICC/IF:1:50~1:200IP:1:50

## Images



Western blot analysis of Phospho-ErbB3 (Y1222) expression in SKBR3 cell treated with neuregulin.

## Product Description

Binds and is activated by neuregulins and NTAK.

---

Note: This product is for in vitro research use only