

## ErbB2 (Phospho-Tyr1139) Rabbit mAb

Catalog No: #14263

Package Size: #14263-1 50ul #14263-2 100ul

Orders: order@signalwayantibody.com

Support: tech@signalwayantibody.com

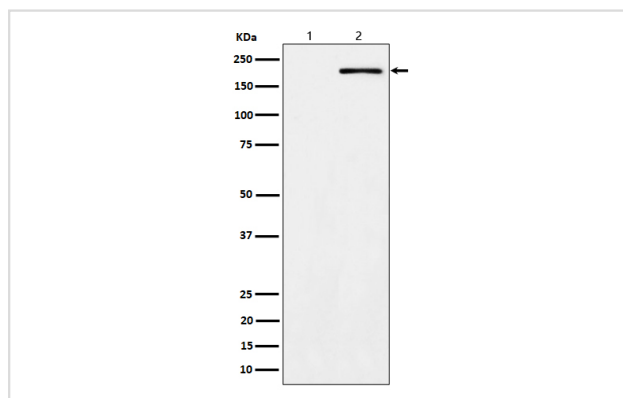
## Description

Product Name	ErbB2 (Phospho-Tyr1139) Rabbit mAb
Host Species	Rabbit
Clonality	Monoclonal
Isotype	Rabbit IgG
Purification	Affinity-chromatography
Applications	WB IP
Species Reactivity	Human
Specificity	Phospho-ErbB2 (Y1139) Antibody detects endogenous levels of total Phospho-ErbB2 (Y1139)
Immunogen Description	A synthesized peptide derived from human Phospho-ErbB2 (Y1139)
Other Names	CD340; CerbB2; ERBB2; HER2; Herstatin; MLN19; NEU; NGL; p185erbB2; TKR1;
Accession No.	Uniprot:P04626
Uniprot	P04626
Calculated MW	180kDa
Formulation	Rabbit IgG in phosphate buffered saline , pH 7.4, 150mM NaCl, 0.02% sodium azide and 50% glycerol.
Storage	Store at +4 $\Lambda$ C short term. Store at -20 $\Lambda$ C long term. Avoid freeze / thaw cycle.

## Application Details

WB:1:500~1:2000IP:1:50

## Images



Western blot analysis of Phospho-ErbB2 (Y1139) expression in (1) A431 cell lysate; (2) A431 treated with EGF cell lysate.

## Product Description

Protein tyrosine kinase that is part of several cell surface receptor complexes, but that apparently needs a coreceptor for ligand binding.

---

Note: This product is for in vitro research use only