

eIF4B (Phospho-Ser406) Rabbit mAb

Catalog No: #14278



Package Size: #14278-1 50ul #14278-2 100ul

Orders: order@signalwayantibody.com
Support: tech@signalwayantibody.com

Description

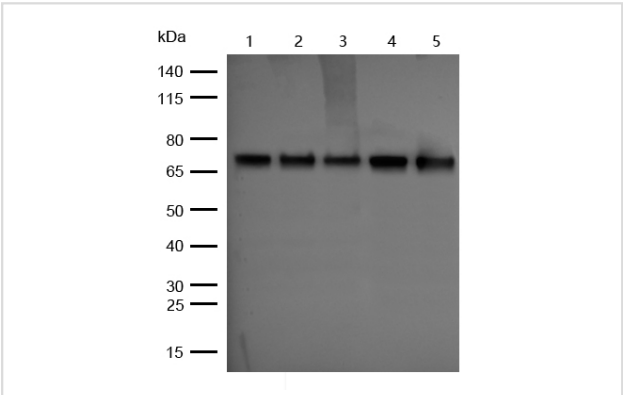
| | |
|-----------------------|--|
| Product Name | eIF4B (Phospho-Ser406) Rabbit mAb |
| Host Species | Rabbit |
| Clonality | Monoclonal |
| Isotype | Rabbit IgG |
| Purification | Affinity-chromatography |
| Applications | WB;IHC;IF |
| Species Reactivity | Human;Mouse;Rat |
| Specificity | Phospho-eIF4B (S406) Antibody detects endogenous levels of total Phospho-eIF4B (S406) |
| Immunogen Description | A synthesized peptide derived from human Phospho-eIF4B (S406) |
| Other Names | EIF4B; |
| Accession No. | Uniprot:P23588 |
| Uniprot | P23588 |
| Calculated MW | 69 kDa |
| SDS-PAGE MW | 75 kDa |
| Formulation | Rabbit IgG in phosphate buffered saline , pH 7.4, 150mM NaCl, 0.02% sodium azide and 50% glycerol. |
| Storage | Store at +4Λ C short term. Store at -20Λ C long term. Avoid freeze / thaw cycle. |

Application Details

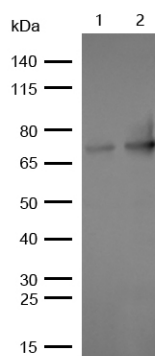
WB:1:500~1:2000

IHC:1:50~1:200

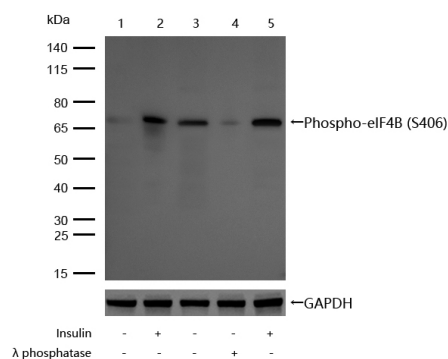
Images



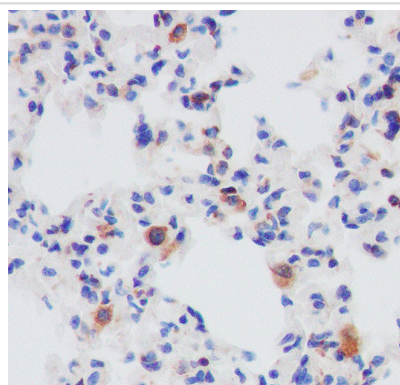
All lanes : Phospho-eIF4B (S406) Rabbit mAb at 1/1k dilution
Lane 1 : Hela whole cell lysates
Lane 2 : 293T whole cell lysates
Lane 3 : K562 whole cell lysates
Lane 4 : HepG2 whole cell lysates
Lane 5 : 3T3 whole cell lysates
Lysates/proteins at 20 µg per lane.
Secondary All lanes : Goat Anti-Rabbit IgG H&L (HRP) at 1/20000 dilution
Predicted band size: 69 kDa
Observed band size: 75 kDa
Exposure time: 3 seconds



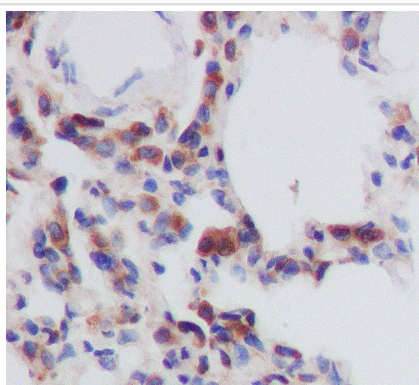
All lanes : Phospho-eIF4B (S406) Rabbit mAb at 1/1k dilution
 Lane 1 : Mouse Liver lysates
 Lane 2 : Rat Liver lysates
 Lysates/proteins at 20 µg per lane.
 Secondary All lanes : Goat Anti-Rabbit IgG H&L (HRP) at 1/20000 dilution
 Predicted band size: 69 kDa
 Observed band size: 75 kDa
 Exposure time: 3 seconds



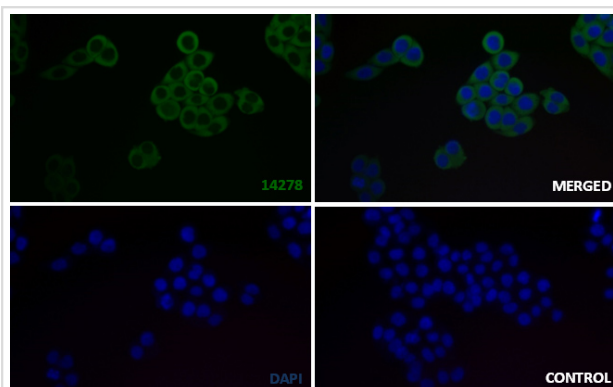
All lanes : Phospho-eIF4B (S406) Rabbit mAb at 1/1k dilution
 Lane 1 : Hela whole cell lysates
 Lane 2 : Hela treated with 100nM Insulin for 20min whole cell lysates
 Lane 3 : 293T whole cell lysates
 Lane 4 : 293T treated with Lambda Protein Phosphatase for 30min whole cell lysates
 Lane 5 : 293T treated with 100nM Insulin for 20min whole cell lysates
 Lysates/proteins at 20 µg per lane.
 Secondary All lanes : Goat Anti-Rabbit IgG H&L (HRP) at 1/20000 dilution
 Predicted band size: 69 kDa
 Observed band size: 75 kDa
 Exposure time: 6 seconds



Formalin-fixed, paraffin-embedded mouse lung tissue stained for Phospho-eIF4B (S406) using 14278 at 1/100 dilution in immunohistochemical analysis.



Formalin-fixed, paraffin-embedded rat lung tissue stained for Phospho-eIF4B (S406) using 14278 at 1/100 dilution in immunohistochemical analysis.



Immunocytochemistry/ Immunofluorescence p-eIF4B (S406) antibody (14278) 14278 staining p-eIF4B (S406) in the HeLa cell line by ICC/IF. Cells were fixed with 4% Paraformaldehyde permeabilized with 0.1% Triton X-100. Samples were incubated with 14278 at a working dilution of 1/100. The secondary antibody was Alexa FluorB 488 goat anti rabbit, used at a dilution of 1/500. The negative control is shown in bottom right hand panel - for the negative control, purified 14278 was used at a dilution of 1/100 followed by Alexa FluorB 647 goat anti- rabbit antibody at a dilution of 1/500. Nuclei were counterstained with DAPI.

Product Description

Required for the binding of mRNA to ribosomes. Functions in close association with EIF4-F and EIF4-A. Binds near the 5'-terminal cap of mRNA in presence of EIF-4F and ATP. Promotes the ATPase activity and the ATP-dependent RNA unwinding activity of both EIF4-A and EIF4-F.

Note: This product is for in vitro research use only