

## Tau (Phospho-Ser404) Rabbit mAb

Catalog No: #14288

Package Size: #14288-1 50ul #14288-2 100ul

Orders: [order@signalwayantibody.com](mailto:order@signalwayantibody.com)Support: [tech@signalwayantibody.com](mailto:tech@signalwayantibody.com)

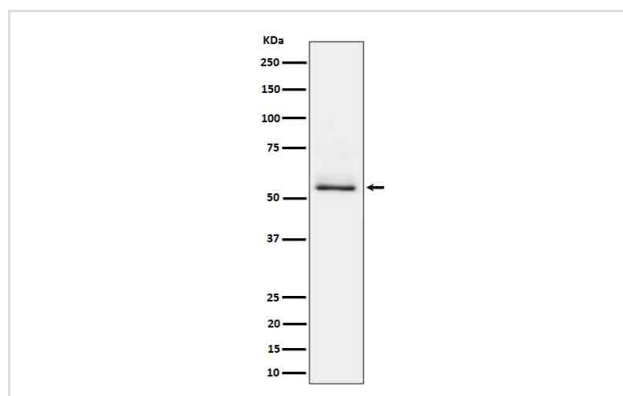
## Description

Product Name	Tau (Phospho-Ser404) Rabbit mAb
Host Species	Rabbit
Clonality	Monoclonal
Isotype	Rabbit IgG
Purification	Affinity-chromatography
Applications	WB IHC ICC/IF IP
Species Reactivity	Human Mouse Rat
Specificity	Phospho-Tau (S404) Antibody detects endogenous levels of total Phospho-Tau (S404)
Immunogen Description	A synthesized peptide derived from human Phospho-Tau (S404)
Other Names	MAPT; Microtubule-associated protein tau; MTBT1; Neurofibrillary tangle protein; Paired helical filament-tau; PHF-tau
Accession No.	Uniprot:P10636
Uniprot	P10636
Calculated MW	50-70kDa
Formulation	Rabbit IgG in phosphate buffered saline , pH 7.4, 150mM NaCl, 0.02% sodium azide and 50% glycerol.
Storage	Store at +4ℳ C short term. Store at -20ℳ C long term. Avoid freeze / thaw cycle.

## Application Details

WB:1:500~1:2000IHC:1:50~1:100ICC/IF:1:50~1:100IP:1:50

## Images



Western blot analysis of Phospho-Tau (S404) expression in mouse brain cell lysate.

## Product Description

Promotes microtubule assembly and stability, and might be involved in the establishment and maintenance of neuronal polarity. The C-terminus binds axonal microtubules while the N-terminus binds neural plasma membrane components, suggesting that tau functions as a linker protein between both.

---

Note: This product is for in vitro research use only