

CPI17 alpha Rabbit mAb

Catalog No: #56005

Package Size: #56005-1 50ul #56005-2 100ul

Orders: order@signalwayantibody.com

Support: tech@signalwayantibody.com

Description

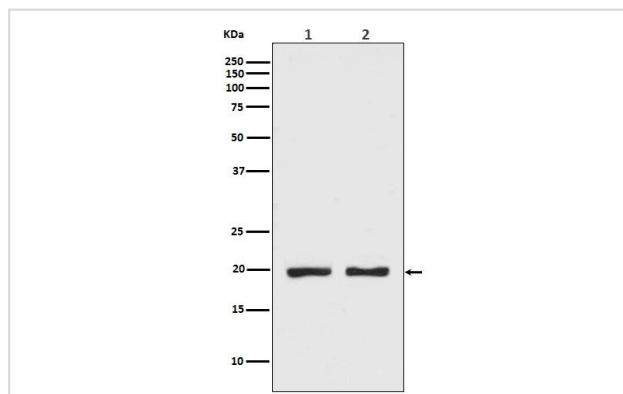
Product Name	CPI17 alpha Rabbit mAb
Host Species	Rabbit
Clonality	Monoclonal
Clone No.	AB8
Isotype	Rabbit IgG
Purification	Affinity-chromatography
Applications	WB IP
Species Reactivity	Human Mouse Rat
Specificity	CPI17 alpha Antibody detects endogenous levels of total CPI17 alpha
Immunogen Description	A synthesized peptide derived from human CPI17 alpha
Target Name	CPI17
Other Names	CPI17; PKC-potentiated inhibitory protein of PP1; PP14A; PPP1INL; PPP1R14A;
Accession No.	Uniprot:Q96A00
Uniprot	Q96A00
Calculated MW	17kDa
Formulation	Rabbit IgG in phosphate buffered saline , pH 7.4, 150mM NaCl, 0.02% sodium azide and 50% glycerol.
Storage	Store at +4ℳ C short term. Store at -20ℳ C long term. Avoid freeze / thaw cycle.

Application Details

WB:1:500~1:2000

IP:1:30

Images



All Lanes: CPI17 alpha Antibody at 1/ 1000 dilution.Lane1:MCF7 cell lysate.Lane2:293T cell lysate.(Proteins at 20ug per lane)Secondary: Goat Anti-Rabbit IgG(HRP) at 1/20000 dilutionPredicted band size : 17kDaObserved band size: 17kDa

Product Description

CPI17 alpha a phosphorylation-dependent inhibitory subunit of protein phosphatase 1 (PP-1A). Phosphorylation by PKC regulates its binding to

PP-1A. Acts co-operatively to inhibit myosin light chain phosphatase (MLCP) activity.

Note: This product is for in vitro research use only