

SATB2 Rabbit mAb

Catalog No: #56014



Package Size: #56014-1 50ul #56014-2 100ul

Orders: [order@signalwayantibody.com](mailto:order@signalwayantibody.com)  
Support: [tech@signalwayantibody.com](mailto:tech@signalwayantibody.com)

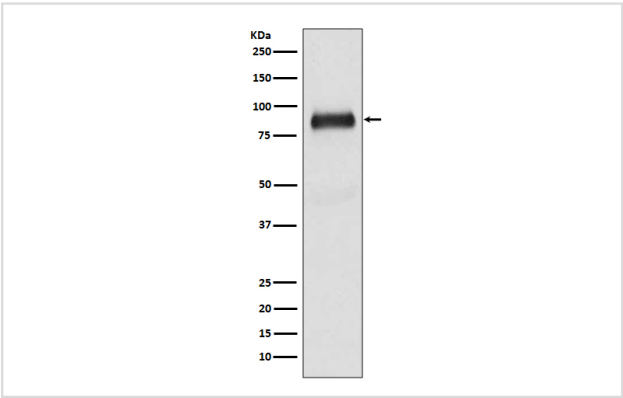
Description

Product Name	SATB2 Rabbit mAb
Host Species	Rabbit
Clonality	Monoclonal
Isotype	Rabbit IgG
Purification	Affinity-chromatography
Applications	WB IHC ICC/IF
Species Reactivity	Human Mouse Rat
Specificity	SATB2 Antibody detects endogenous levels of total SATB2
Immunogen Description	A synthesized peptide derived from human SATB2
Other Names	GLSS; SATB family member 2; SATB homeobox 2; SATB2;Special AT rich sequence binding protein 2;
Accession No.	Uniprot:Q9UPW6
Uniprot	Q9UPW6
Calculated MW	81kDa
Formulation	Rabbit IgG in phosphate buffered saline , pH 7.4, 150mM NaCl, 0.02% sodium azide and 50% glycerol.
Storage	Store at +4Λ C short term. Store at -20Λ C long term. Avoid freeze / thaw cycle.

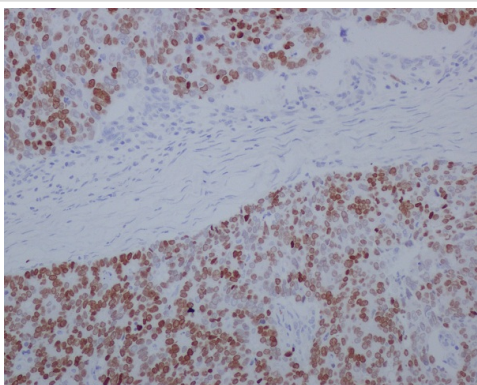
Application Details

WB:1:500~1:2000IHC:1:50~1:200ICC/IF:1:50~1:200

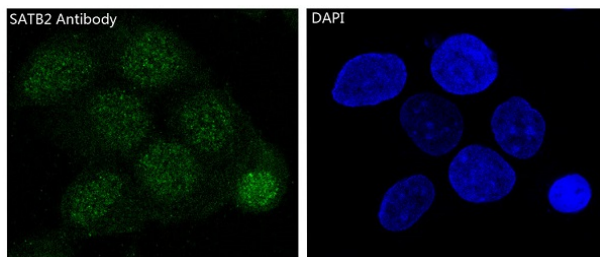
Images



Western blot analysis of SATB2 expression in Saos-2 cell lysate.



Immunohistochemical analysis of paraffin-embedded human stomach cancer, using SATB2 Antibody.



Immunofluorescent analysis of SH-SY5Y cells, using SATB2 Antibody .

## Product Description

Binds to DNA, at nuclear matrix- or scaffold-associated regions. Thought to recognize the sugar-phosphate structure of double-stranded DNA. Transcription factor controlling nuclear gene expression, by binding to matrix attachment regions (MARs) of DNA and inducing a local chromatin-loop remodeling. Acts as a docking site for several chromatin remodeling enzymes and also by recruiting corepressors (HDACs) or coactivators (HATs) directly to promoters and enhancers.

**Note:** This product is for in vitro research use only