

GM130 Rabbit mAb

Catalog No: #56019

Package Size: #56019-1 50ul #56019-2 100ul

Orders: order@signalwayantibody.comSupport: tech@signalwayantibody.com

Description

Product Name	GM130 Rabbit mAb
Host Species	Rabbit
Clonality	Monoclonal
Isotype	Rabbit IgG
Purification	Affinity-chromatography
Applications	WB IHC ICC/IF IP
Species Reactivity	Human Mouse Rat Monkey Cow Dog
Specificity	GM130 Antibody detects endogenous levels of total GM130
Immunogen Description	A synthesized peptide derived from human GM130
Other Names	GM130; Gm130 autoantigen; GOLGA 2; Golga2; Golgi autoantigen; Golgin 95;
Accession No.	Uniprot:Q08379
Uniprot	Q08379
Calculated MW	130kDa
Formulation	Rabbit IgG in 10mM phosphate buffered saline , pH 7.4, 150mM sodium chloride, 0.05% BSA, 0.02% sodium azide and 50% glycerol.
Storage	Store at +4ℳ C short term. Store at -20ℳ C long term. Avoid freeze / thaw cycle.

Application Details

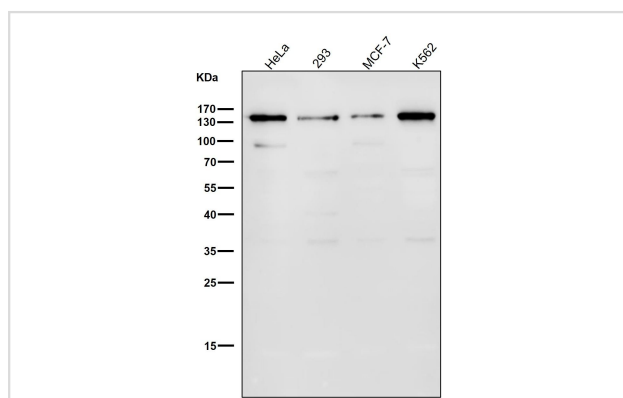
WB:1:500~1:2000

IHC:1:50~1:200

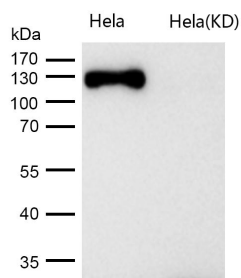
ICC/IF:1:50~1:200

IP:1:50

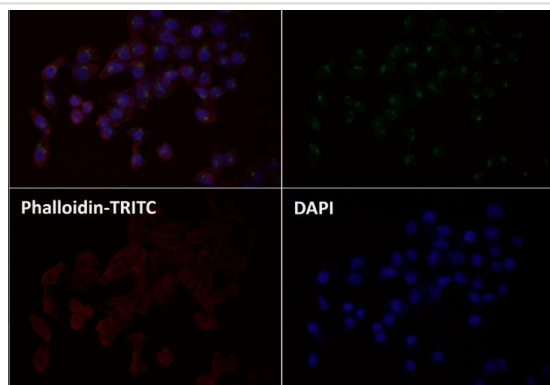
Images



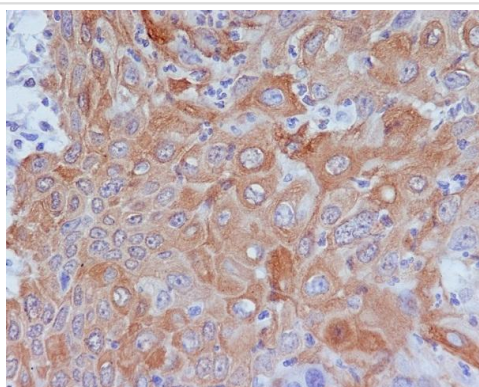
All lanes use the Antibody at 1:2K dilution for 1 hour at room temperature.



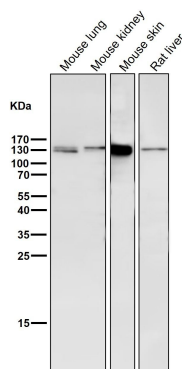
All lanes use the Antibody at 1:1K dilution for 1 hour at room temperature.



Immunofluorescent analysis using the Antibody at 1:500 dilution.(HeLa)



Immunohistochemical analysis of paraffin-embedded human cervix carcinoma, using GM130 Antibody.



All lanes use the Antibody at 1:2K dilution for 1 hour at room temperature.

Product Description

Golgi auto-antigen; probably involved in maintaining cis-Golgi structure. The Golgi apparatus, which participates in glycosylation and transport of proteins and lipids in the secretory pathway, consists of a series of stacked cisternae (flattened membrane sacs). Interactions between the Golgi and microtubules are thought to be important for the reorganization of the Golgi after it fragments during mitosis. This gene encodes one of the golgins, a family of proteins localized to the Golgi.

Note: This product is for in vitro research use only