

MEK1/2 Rabbit mAb

Catalog No: #56024



Package Size: #56024-1 50ul #56024-2 100ul

Orders: [order@signalwayantibody.com](mailto:order@signalwayantibody.com)  
Support: [tech@signalwayantibody.com](mailto:tech@signalwayantibody.com)

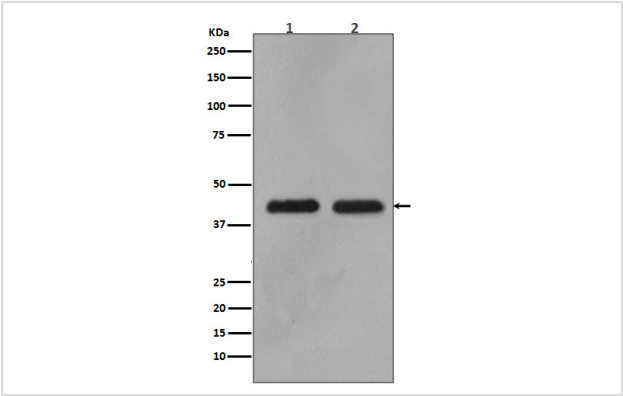
Description

Product Name	MEK1/2 Rabbit mAb
Host Species	Rabbit
Clonality	Monoclonal
Isotype	Rabbit IgG
Purification	Affinity-chromatography
Applications	WB IHC ICC/IF IP
Species Reactivity	Human Mouse Rat
Specificity	MEK1/2 Antibody detects endogenous levels of total MEK1/2
Immunogen Description	A synthesized peptide derived from human MEK1/2
Other Names	ERK activator kinase 1, MAP kinase kinase 1, MAP2K1, MAPK/ERK kinase 1, MAPKK 1, MAPKK1, MEK1, MP2K1, PRKMK1, kinase MEK1
Accession No.	Uniprot:Q02750/P36507
Uniprot	Q02750/P36507
Calculated MW	44kDa
Formulation	Rabbit IgG in phosphate buffered saline , pH 7.4, 150mM NaCl, 0.02% sodium azide and 50% glycerol.
Storage	Store at +4Λ C short term. Store at -20Λ C long term. Avoid freeze / thaw cycle.

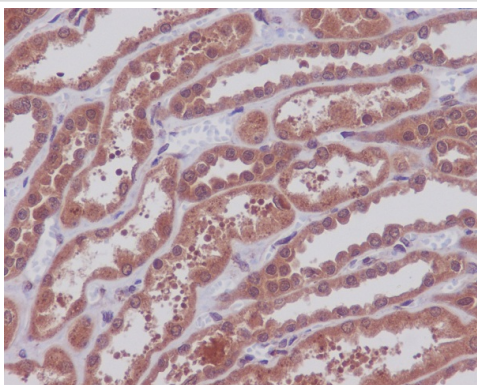
Application Details

WB:1:5000~1:10000IHC:1:100~1:500ICC/IF:1:50~1:100IP:1:50~1:100

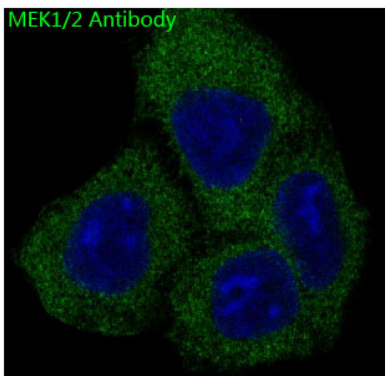
Images



Western blot analysis of MEK1/2 expression in (1) 293T cell lysate; (2) A549 cell lysate.



Immunohistochemical analysis of paraffin-embedded human kidney, using MEK1/2 Antibody.



Immunofluorescent analysis of Hela cells, using MEK1/2 Antibody .

## Product Description

Dual specificity protein kinase which acts as an essential component of the MAP kinase signal transduction pathway. Binding of extracellular ligands such as growth factors, cytokines and hormones to their cell-surface receptors activates RAS and this initiates RAF1 activation. RAF1 then further activates the dual-specificity protein kinases MAP2K1/MEK1 and MAP2K2/MEK2.

Note: This product is for in vitro research use only