

## Talin 2 Rabbit mAb

Catalog No: #56027

Package Size: #56027-1 50ul #56027-2 100ul

Orders: order@signalwayantibody.com

Support: tech@signalwayantibody.com

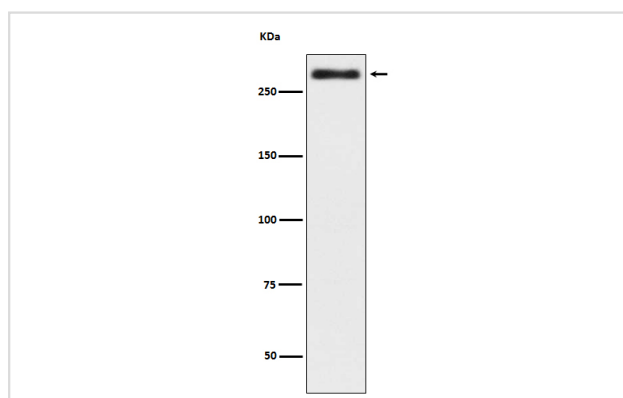
## Description

Product Name	Talin 2 Rabbit mAb
Host Species	Rabbit
Clonality	Monoclonal
Isotype	Rabbit IgG
Purification	Affinity-chromatography
Applications	WB
Species Reactivity	Human Mouse Rat
Specificity	Talin 2 Antibody detects endogenous levels of total Talin 2
Immunogen Description	A synthesized peptide derived from human Talin 2
Other Names	DKFZp451B1011;ILWEQ;Talin-2;talin2;TLN 2;TLN2
Accession No.	Uniprot:Q9Y4G6
Uniprot	Q9Y4G6
Calculated MW	270kDa
Formulation	Rabbit IgG in phosphate buffered saline , pH 7.4, 150mM NaCl, 0.02% sodium azide and 50% glycerol.
Storage	Store at +4ℳ C short term. Store at -20ℳ C long term. Avoid freeze / thaw cycle.

## Application Details

WB:1:500~1:2000

## Images



Western blot analysis of Talin 2 in expression HeLa cell lysate.

## Product Description

Talin2 acts as a major component of focal adhesion plaques that links integrin to the actin cytoskeleton, may play an important role in cell adhesion. Recruits PIP5K1C to focal adhesion plaques and strongly activates its kinase activity.

---

Note: This product is for in vitro research use only