

## p57 Kip2 Rabbit mAb

Catalog No: #56039

Package Size: #56039-1 50ul #56039-2 100ul

Orders: [order@signalwayantibody.com](mailto:order@signalwayantibody.com)Support: [tech@signalwayantibody.com](mailto:tech@signalwayantibody.com)

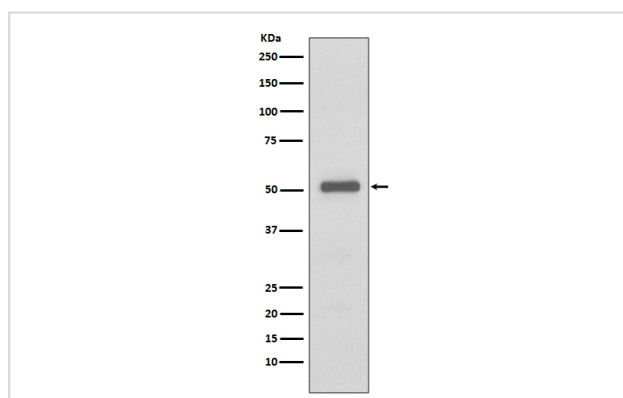
## Description

Product Name	p57 Kip2 Rabbit mAb
Host Species	Rabbit
Clonality	Monoclonal
Isotype	Rabbit IgG
Purification	Affinity-chromatography
Applications	WB IHC ICC/IF IP
Species Reactivity	Human Mouse Rat
Specificity	p57 Kip2 Antibody detects endogenous levels of total p57 Kip2
Immunogen Description	A synthesized peptide derived from human p57 Kip2
Other Names	BWCR; BWS; KIP2; WBS; p57; p57 Kip2; WBS ; CDKN1C; Cyclin dependent kinase inhibitor 1C
Accession No.	Uniprot:P49918
Uniprot	P49918
Calculated MW	57kDa
Formulation	Rabbit IgG in phosphate buffered saline , pH 7.4, 150mM NaCl, 0.02% sodium azide and 50% glycerol.
Storage	Store at +4 $\Lambda$ C short term. Store at -20 $\Lambda$ C long term. Avoid freeze / thaw cycle.

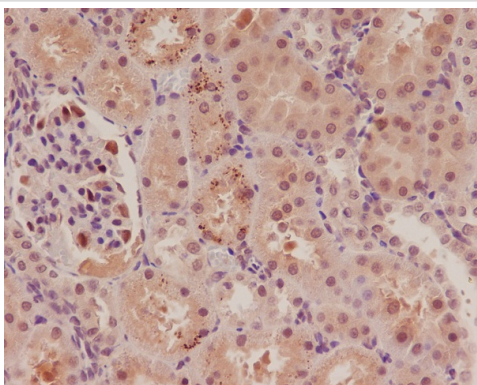
## Application Details

WB:1:500~1:2000IHC:1:50~1:200ICC/IF:1:50~1:200IP:1:50

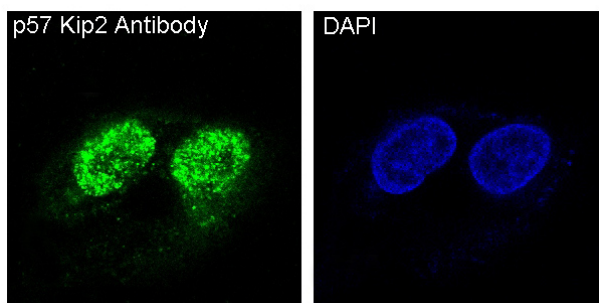
## Images



Western blot analysis on HeLa cell using p57 Kip2 Antibody.



Immunohistochemical analysis of paraffin-embedded rat kidney, using p57 Kip2 Antibody .



Immunofluorescent analysis of HeLa cells treated with dexamethasone, using p57 Kip2 Antibody .

## Product Description

p27 Kip1 is a member of the Cip/Kip family of cyclin-dependent kinase inhibitors. Like its relatives, p57 Kip2 and p21 Waf1/Cip1, the ability to enforce the G1 restriction point is derived from its inhibitory binding to CDK2/cyclin E and other CDK/cyclin complexes. Expression levels of p27 are upregulated in quiescent cells and in cells treated with cAMP or other negative cell cycle regulators.

Note: This product is for in vitro research use only