

PELP1 Rabbit mAb

Catalog No: #56045

Package Size: #56045-1 50ul #56045-2 100ul

Orders: order@signalwayantibody.comSupport: tech@signalwayantibody.com

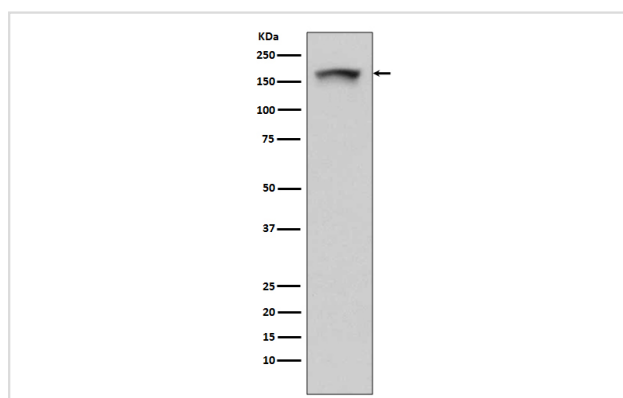
Description

Product Name	PELP1 Rabbit mAb
Host Species	Rabbit
Clonality	Monoclonal
Isotype	Rabbit IgG
Purification	Affinity-chromatography
Applications	WB IHC ICC/IF FC
Species Reactivity	Human
Specificity	PELP1 Antibody detects endogenous levels of total PELP1
Immunogen Description	A synthesized peptide derived from human PELP1
Other Names	HMX3; MNAR; P160; PELP1; PELP1 proline glutamic acid leucine rich protein 1; PELP1 proline- glutamic;
Accession No.	Uniprot:Q8IZL8
Uniprot	Q8IZL8
Calculated MW	160kDa
Formulation	Rabbit IgG in phosphate buffered saline , pH 7.4, 150mM NaCl, 0.02% sodium azide and 50% glycerol.
Storage	Store at +4 Λ C short term. Store at -20 Λ C long term. Avoid freeze / thaw cycle.

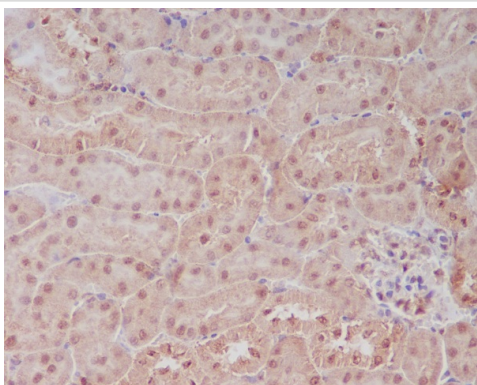
Application Details

WB:1:500~1:1000IHC:1:50~1:200ICC/IF:1:50~1:200FC:1:50

Images



Western blot analysis of PELP1 expression in 293T cell lysate.



Immunohistochemical analysis of paraffin-embedded mouse kidney, using PELP1 Antibody.

Product Description

This gene encodes a transcription factor which coactivates transcription of estrogen receptor responsive genes and corepresses genes activated by other hormone receptors or sequence-specific transcription factors. Expression of this gene is regulated by both members of the estrogen receptor family. This gene may be involved in the progression of several types of cancer. Alternative splicing results in multiple transcript variants.

Note: This product is for in vitro research use only