

CETP Rabbit mAb

Catalog No: #56052

Package Size: #56052-1 50ul #56052-2 100ul

Orders: order@signalwayantibody.com

Support: tech@signalwayantibody.com

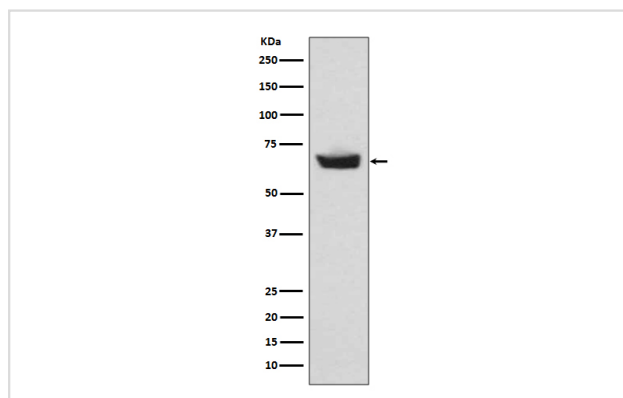
Description

| | |
|-----------------------|--|
| Product Name | CETP Rabbit mAb |
| Host Species | Rabbit |
| Clonality | Monoclonal |
| Isotype | Rabbit IgG |
| Purification | Affinity-chromatography |
| Applications | WB IP |
| Species Reactivity | Human |
| Specificity | CETP Antibody detects endogenous levels of total CETP |
| Immunogen Description | A synthesized peptide derived from human CETP |
| Other Names | BPIFF; HDLCQ10;CETP; Lipid transfer protein I; Cholesteryl ester transfer protein; |
| Accession No. | Uniprot:P11597 |
| Uniprot | P11597 |
| Calculated MW | 55kDa |
| Formulation | Rabbit IgG in phosphate buffered saline , pH 7.4, 150mM NaCl, 0.02% sodium azide and 50% glycerol. |
| Storage | Store at +4ℳ C short term. Store at -20ℳ C long term. Avoid freeze / thaw cycle. |

Application Details

WB:1:500~1:2000IP:1:50

Images



Western blot analysis of CETP expression in human plasma lysate.

Product Description

Cholesteryl ester transfer protein (CETP) is a circulating metabolic enzyme that transports cholesterol from the arteries to the liver. CETP converts cholesteryl esters from antiatherogenic high density lipoproteins (HDLs) to proatherogenic apolipoprotein B (apoB)-containing lipoproteins, including very low-, intermediate-, and low-DLs. Efficient transfer and exchange of cholesteryl esters and triglycerides between the lipoprotein classes of human plasma is necessary to maintain healthy arteries.

Note: This product is for in vitro research use only