

Rad21 Rabbit mAb

Catalog No: #56053

Package Size: #56053-1 50ul #56053-2 100ul

Orders: order@signalwayantibody.comSupport: tech@signalwayantibody.com

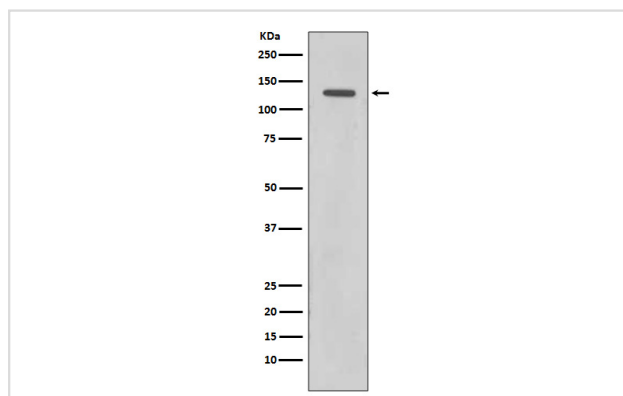
Description

Product Name	Rad21 Rabbit mAb
Host Species	Rabbit
Clonality	Monoclonal
Isotype	Rabbit IgG
Purification	Affinity-chromatography
Applications	WB FC
Species Reactivity	Human Mouse Rat
Specificity	Rad21 Antibody detects endogenous levels of total Rad21
Immunogen Description	A synthesized peptide derived from human Rad21
Other Names	hHR21; Nuclear matrix protein 1; NXP-1; SCC1 homolog; HR21; KIAA0078; NXP1; Rad21;
Accession No.	Uniprot:O60216
Uniprot	O60216
Calculated MW	72,128kDa
Formulation	Rabbit IgG in phosphate buffered saline , pH 7.4, 150mM NaCl, 0.02% sodium azide and 50% glycerol.
Storage	Store at +4 Λ C short term. Store at -20 Λ C long term. Avoid freeze / thaw cycle.

Application Details

WB:1:500~1:1000FC:1:50

Images



Western blot analysis of Rad21 expression in HeLa cell lysate.

Product Description

Rad21 is one of the major cohesin subunits that holds sister chromatids together until anaphase, when proteolytic cleavage by separase, a caspaselike enzyme, allows chromosomal separation. Rad21 interacts with Rec8 to form a cohesin complex that functions in sister chromatid alignment. Rad21 is also involved in the repair of double-strand breaks in DNA and is essential for mitotic growth. Rad21 undergoes a C-terminal cleavage induced by diverse stimuli right before apoptosis.

Note: This product is for in vitro research use only