

## Rho A + B + C Rabbit mAb

Catalog No: #56080

Package Size: #56080-1 50ul #56080-2 100ul

Orders: [order@signalwayantibody.com](mailto:order@signalwayantibody.com)Support: [tech@signalwayantibody.com](mailto:tech@signalwayantibody.com)

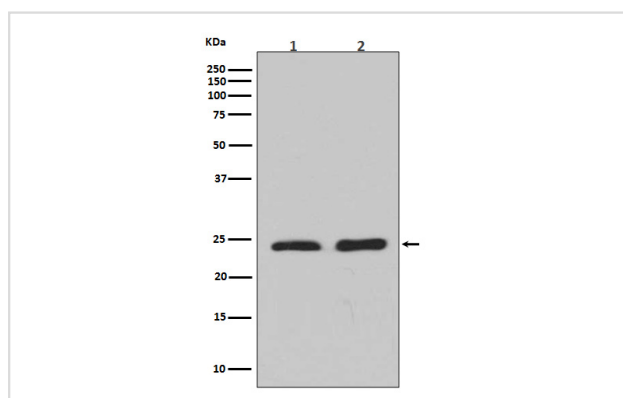
## Description

Product Name	Rho A + B + C Rabbit mAb
Host Species	Rabbit
Clonality	Monoclonal
Isotype	Rabbit IgG
Purification	Affinity-chromatography
Applications	WB IHC ICC/IF FC
Species Reactivity	Human Mouse Rat
Specificity	Rho A + B + C Antibody detects endogenous levels of total Rho A + B + C
Immunogen Description	A synthesized peptide derived from human Rho A + B + C
Other Names	ARH12, ARH6; ARH9; ARHA; ARHA2; H12; RHO12; Transforming protein RhoA; RHOA; RHOB; RHOC;
Accession No.	Uniprot:P61586/P62745/P08134
Uniprot	P61586/P62745/P08134
Calculated MW	22kDa
Formulation	Rabbit IgG in phosphate buffered saline , pH 7.4, 150mM NaCl, 0.02% sodium azide and 50% glycerol.
Storage	Store at +4ℳ C short term. Store at -20ℳ C long term. Avoid freeze / thaw cycle.

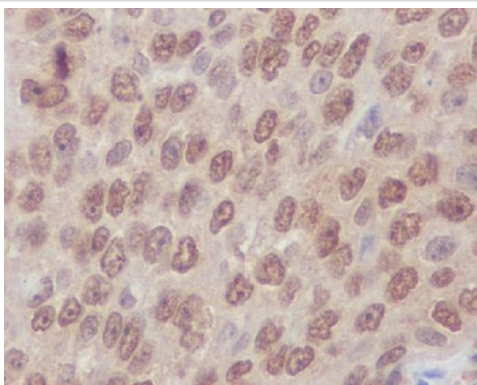
## Application Details

WB:1:500~1:2000IHC:1:500~1:1000ICC/IF:1:100~1:500FC:1:200

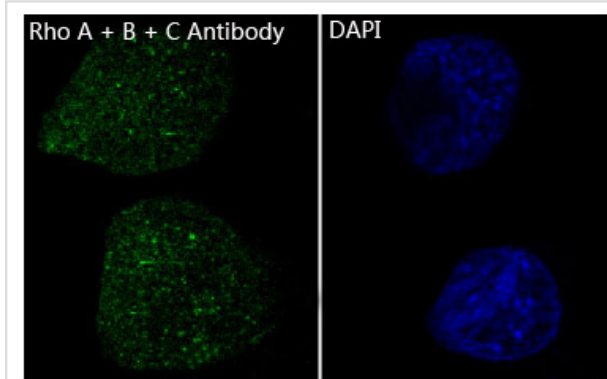
## Images



Western blot analysis of Rho A + B + C expression in (1) Jurkat cell lysate; (2) NIH/3T3 cell lysate.



Immunohistochemical analysis of paraffin-embedded human lung carcinoma, using Rho A + B + C Antibody .



Immunofluorescent analysis of HeLa cells, using Rho A + B + C Antibody .

## Product Description

RhoA , RhoB , RhoC is a small G protein of the Rho family. Regulates a signal transduction pathway linking plasma membrane receptors to the assembly of focal adhesions and actin stress fibers. The three mammalian Rho proteins (A, B and C) are approximately 30% homologous to Ras and are expressed in a wide range of cell types. Both Ras p21 and Rho p21, as well as other members of the Ras superfamily, contain a carboxy terminal CAAX sequence (C, cysteine; A, aliphatic amino acid; X, any amino acid) which in the case of Ras has been shown to be essential for correct localization and function.

Note: This product is for in vitro research use only