

Mast Cell Tryptase Rabbit mAb

Catalog No: #56103



Package Size: #56103-1 50ul #56103-2 100ul

Orders: [order@signalwayantibody.com](mailto:order@signalwayantibody.com)  
Support: [tech@signalwayantibody.com](mailto:tech@signalwayantibody.com)

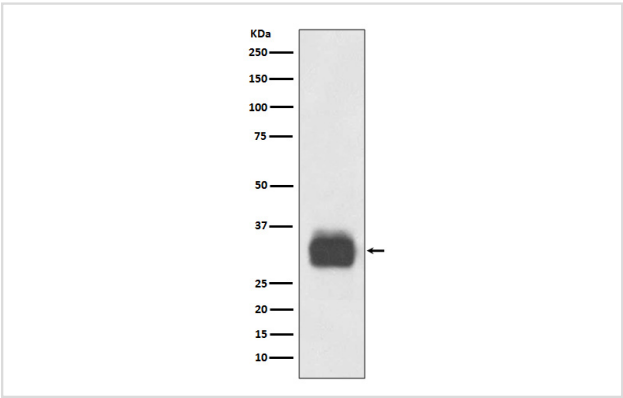
Description

Product Name	Mast Cell Tryptase Rabbit mAb
Host Species	Rabbit
Clonality	Monoclonal
Isotype	Rabbit IgG
Purification	Affinity-chromatography
Applications	WB IHC IP
Species Reactivity	Human Mouse Rat
Specificity	Mast Cell Tryptase Antibody detects endogenous levels of Mast Cell Tryptase
Immunogen Description	A synthesized peptide derived from human Mast Cell Tryptase
Other Names	TPS1; TPS2; TPSAB1; TPSB1; MCP 7 ; Mast cell protease 7; Tryptase alpha 1;
Accession No.	Uniprot:Q15661
Uniprot	Q15661
Calculated MW	30kDa
Formulation	Rabbit IgG in phosphate buffered saline , pH 7.4, 150mM NaCl, 0.02% sodium azide and 50% glycerol.
Storage	Store at +4Λ C short term. Store at -20Λ C long term. Avoid freeze / thaw cycle.

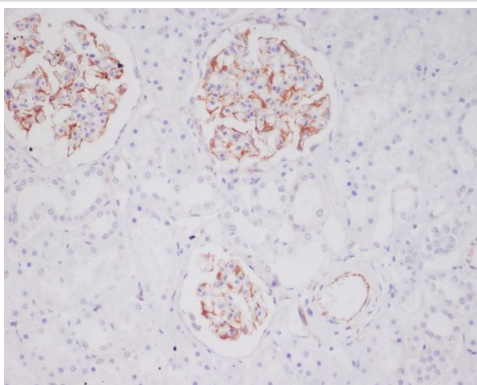
Application Details

WB:1:500~1:2000IHC:1:50~1:200IP:1:50

Images



Western blot analysis of Mast Cell Tryptase expression in Human tonsil lysate.



Immunohistochemical analysis of paraffin-embedded human kidney, using Mast Cell Tryptase Antibody.

## Product Description

Tryptases comprise a family of trypsin-like serine proteases, the peptidase family S1. Tryptases are enzymatically active only as heparin-stabilized tetramers, and they are resistant to all known endogenous proteinase inhibitors. Several tryptase genes are clustered on chromosome 16p13.3. These genes are characterized by several distinct features.

Note: This product is for in vitro research use only