

Cdc25C Rabbit mAb

Catalog No: #56114

Package Size: #56114-1 50ul #56114-2 100ul

Orders: order@signalwayantibody.comSupport: tech@signalwayantibody.com

Description

Product Name	Cdc25C Rabbit mAb
Host Species	Rabbit
Clonality	Monoclonal
Isotype	Rabbit IgG
Purification	Affinity-chromatography
Applications	WB IHC ICC/IF IP FC
Species Reactivity	Human
Specificity	Cdc25C Antibody detects endogenous levels of total Cdc25C
Immunogen Description	A synthesized peptide derived from human Cdc25C
Other Names	CDC25; CDC25C; Cell division cycle 25 homolog C; MPIP3; PPP1R60;
Accession No.	Uniprot:P30307
Uniprot	P30307
Calculated MW	60kDa
Formulation	Rabbit IgG in phosphate buffered saline , pH 7.4, 150mM NaCl, 0.02% sodium azide and 50% glycerol.
Storage	Store at +4 Λ C short term. Store at -20 Λ C long term. Avoid freeze / thaw cycle.

Application Details

WB:1:500~1:2000

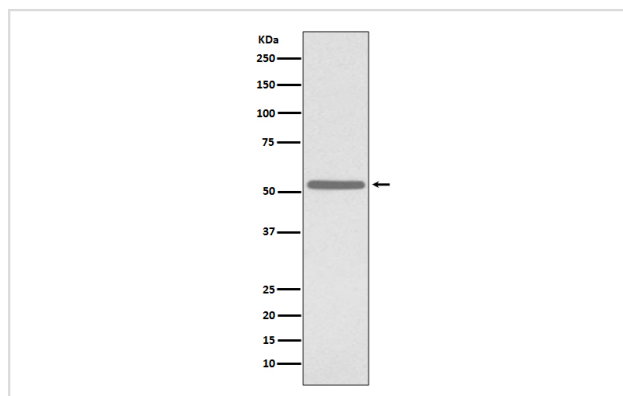
IHC:1:10~1:500

ICC/IF:1:50~1:200

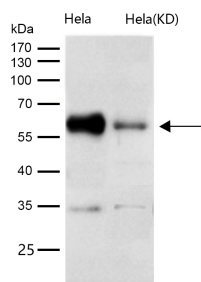
IP:1:30

FC:1:50

Images



Western blot analysis of Cdc25C expression in K562 cell lysate.



All lanes use the Antibody at 1:1K dilution for 1 hour at room temperature.

Product Description

Functions as a dosage-dependent inducer in mitotic control. It is a tyrosine protein phosphatase required for progression of the cell cycle. It directly dephosphorylates CDK1 and activate its kinase activity.

Note: This product is for in vitro research use only