

YBX2 Antibody

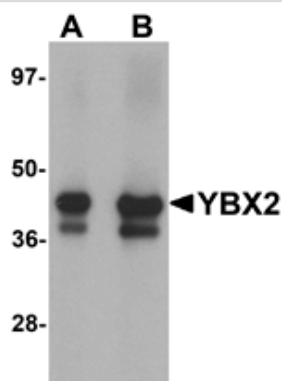
Catalog No: #25171

Orders: order@signalwayantibody.comSupport: tech@signalwayantibody.com

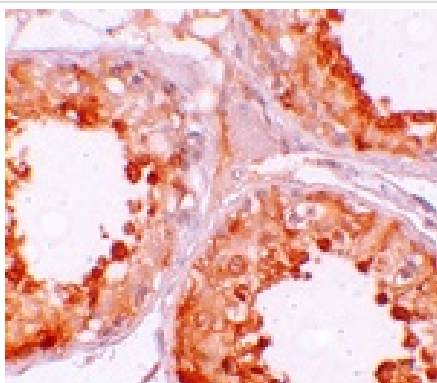
Description

Product Name	YBX2 Antibody
Host Species	Rabbit
Clonality	Polyclonal
Purification	Affinity chromatography purified via peptide column
Applications	ELISA WB IHC
Species Reactivity	Hu Ms Rt
Immunogen Type	Peptide
Immunogen Description	Raised against an 18 amino acid peptide near the carboxy end of human YBX2.
Target Name	YBX2
Other Names	Y box binding protein 2, YBOX2, MSY2, CONTRIN, CSDA3, Dbpc, DNA-binding protein C
Accession No.	Swiss-Prot:Q9Y2T7Gene ID:51087
Uniprot	Q9Y2T7
GeneID	51087;
Concentration	1mg/ml
Formulation	Supplied in PBS containing 0.02% sodium azide.
Storage	Can be stored at -20°C, stable for one year. As with all antibodies care should be taken to avoid repeated freeze thaw cycles. Antibodies should not be exposed to prolonged high temperatures.

Images



Western blot analysis of YBX2 in human testis tissue lysate with YBX2 antibody at (A) 1 and (B) 2 ug/mL.



Immunohistochemistry of YBX2 in human testis tissue with YBX2 antibody at 10 ug/mL.

Background

Germ cell specific Y-box binding protein (YBX2), a germ-cell-specific member of the Y-box family of DNA-/RNA-binding proteins, is a major constituent of messenger ribonucleoprotein particles (mRNPs) and involved in the regulation of the stability and/or translation of germ cell mRNAs. It is proposed to function as a coactivator of transcription in the nucleus and to stabilize and store maternal and paternal mRNAs in the cytoplasm. YBX2 binds to the Y-box consensus promoter element and is expressed in oocytes and testicular germ cells in the stage of spermatogonia to spermatocyte. Recent studies show that deletion of YBX2 leads to the disruption of both spermatogenesis and oogenesis.

Note: This product is for in vitro research use only