

# Kappa light chain Rabbit mAb

Catalog No: #56149

Package Size: #56149-1 50ul #56149-2 100ul

Orders: [order@signalwayantibody.com](mailto:order@signalwayantibody.com)Support: [tech@signalwayantibody.com](mailto:tech@signalwayantibody.com)

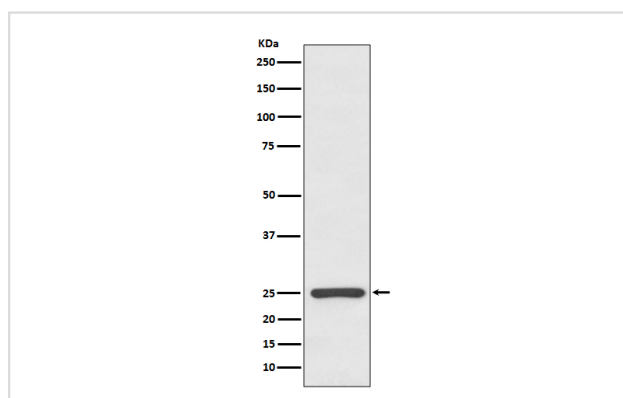
## Description

Product Name	Kappa light chain Rabbit mAb
Host Species	Rabbit
Clonality	Monoclonal
Isotype	Rabbit IgG
Purification	Affinity-chromatography
Applications	WB IHC ICC/IF IP
Species Reactivity	Human
Specificity	Kappa light chain Antibody detects endogenous levels of total Kappa light chain
Immunogen Description	A synthesized peptide derived from human Kappa light chain
Other Names	HCAK1; Ig kappa chain C region; IGKCD; Immunoglobulin InV;
Accession No.	Uniprot:P01834
Uniprot	P01834
Calculated MW	25kDa
Formulation	Rabbit IgG in phosphate buffered saline , pH 7.4, 150mM NaCl, 0.02% sodium azide and 50% glycerol.
Storage	Store at +4ℳ C short term. Store at -20ℳ C long term. Avoid freeze / thaw cycle.

## Application Details

WB:1:1000~1:5000IHC:1:50~1:200ICC/IF:1:100~1:500IP:1:50

## Images



Western blot analysis of Kappa light chain expression in human plasma lysate.

## Product Description

The five types of immunoglobulin heavy chains are known as: IgG, IgA, IgM, IgD, and IgE. IgG is divided into four subclasses, and IgA is divided into two subclasses. In serum IgA and IgG are monomers with a single 4 polypeptide unit; while, IgM is a pentamer. IgA may also form polymers. Kappa light chain antibody can be used for the identification of leukemias, plasmacytomas and certain non Hodgkin's lymphomas.

---

Note: This product is for in vitro research use only