

Clathrin heavy chain Rabbit mAb

Catalog No: #56165

Package Size: #56165-1 50ul #56165-2 100ul

Orders: order@signalwayantibody.comSupport: tech@signalwayantibody.com

Description

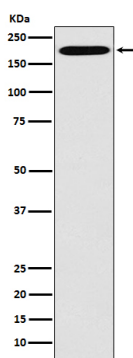
Product Name	Clathrin heavy chain Rabbit mAb
Host Species	Rabbit
Clonality	Monoclonal
Isotype	Rabbit IgG
Purification	Affinity-chromatography
Applications	WB IHC
Species Reactivity	Human Mouse Rat
Specificity	Clathrin heavy chain Antibody detects endogenous levels of total Clathrin heavy chain
Immunogen Description	A synthesized peptide derived from human Clathrin heavy chain
Other Names	CHC17; Clathrin heavy chain; Clathrin heavy chain like 1; CLH17; CLH22; CLTC; CLTCL; CLTD;
Accession No.	Uniprot:Q00610/P53675
Uniprot	Q00610/P53675
Calculated MW	191kDa
Formulation	Rabbit IgG in phosphate buffered saline , pH 7.4, 150mM NaCl, 0.02% sodium azide and 50% glycerol.
Storage	Store at +4 Λ C short term. Store at -20 Λ C long term. Avoid freeze / thaw cycle.

Application Details

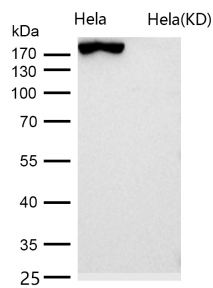
WB:1:1000~1:5000

IHC:1:50~1:200

Images



Western blot analysis of Clathrin heavy chain expression in Hela cell lysate.



All lanes use the Antibody at 1:2K dilution for 1 hour at room temperature.

Product Description

Clathrin heavy chain proteins are composed of several functional domains, including a carboxy-terminal region that permits interaction with other heavy chain proteins within a triskelion, and a globular amino-terminal region that associates with other vesicle proteins. Adaptor proteins, such as AP2, epsin and EPS15, are responsible for the recruitment of vesicle proteins to sites of pit formation and the assembly of the clathrin-coated vesicle.

Note: This product is for in vitro research use only