

## MTA2 Rabbit mAb

Catalog No: #56194

Package Size: #56194-1 50ul #56194-2 100ul

Orders: [order@signalwayantibody.com](mailto:order@signalwayantibody.com)Support: [tech@signalwayantibody.com](mailto:tech@signalwayantibody.com)

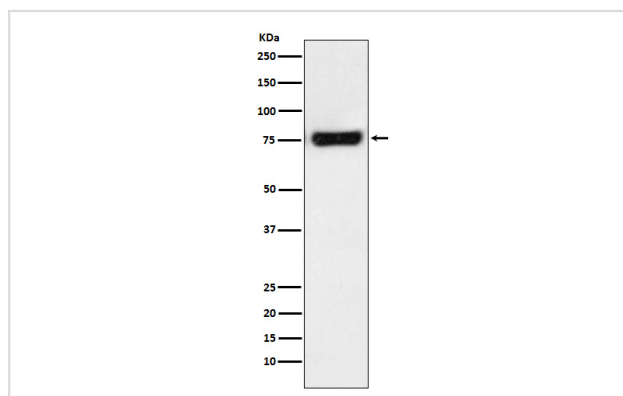
## Description

Product Name	MTA2 Rabbit mAb
Host Species	Rabbit
Clonality	Monoclonal
Isotype	Rabbit IgG
Purification	Affinity-chromatography
Applications	WB IHC ICC/IF FC
Species Reactivity	Human
Specificity	MTA2 Antibody detects endogenous levels of total MTA2
Immunogen Description	A synthesized peptide derived from human MTA2
Other Names	Mata111; Metastasis associated gene 1 like 1; Metastasis associated gene family member 2; Mmta2; MTA1L1; p53 target protein in deacetylase complex; PID;
Accession No.	Uniprot:O94776
Uniprot	O94776
Calculated MW	75kDa
Formulation	Rabbit IgG in phosphate buffered saline , pH 7.4, 150mM NaCl, 0.02% sodium azide and 50% glycerol.
Storage	Store at +4ℳ C short term. Store at -20ℳ C long term. Avoid freeze / thaw cycle.

## Application Details

WB:1:500~1:2000IHC:1:50~1:200ICC/IF:1:50~1:200FC:1:100

## Images



Western blot analysis of MTA2 expression in HeLa cell lysate.

## Product Description

The p53 tumor suppressor gene integrates numerous signals that control cell life and death. There are several proteins that are involved in the p53 pathway, including Chk2, p53R2, p53AIP1, Noxa, PIDD, and MTA2. The transcriptional activity of p53 is modulated by protein stability and acetylation.

---

Note: This product is for in vitro research use only