

MBD1 Rabbit mAb

Catalog No: #56200

Package Size: #56200-1 50ul #56200-2 100ul

Orders: order@signalwayantibody.com

Support: tech@signalwayantibody.com

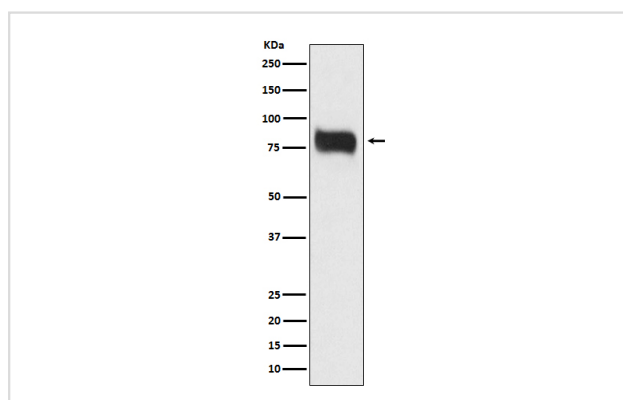
Description

| | |
|-----------------------|----------------------------------------------------------------------------------------------------|
| Product Name | MBD1 Rabbit mAb |
| Host Species | Rabbit |
| Clonality | Monoclonal |
| Isotype | Rabbit IgG |
| Purification | Affinity-chromatography |
| Applications | WB IHC ICC/IF IP |
| Species Reactivity | Human |
| Specificity | MBD1 Antibody detects endogenous levels of total MBD1 |
| Immunogen Description | A synthesized peptide derived from human MBD1 |
| Other Names | CXXC 3; Mbd1; MECP1 COMPLEX; PCM1; RFT; |
| Accession No. | Uniprot:Q9UIS9 |
| Uniprot | Q9UIS9 |
| Calculated MW | 67kDa |
| Formulation | Rabbit IgG in phosphate buffered saline , pH 7.4, 150mM NaCl, 0.02% sodium azide and 50% glycerol. |
| Storage | Store at +4 Λ C short term. Store at -20 Λ C long term. Avoid freeze / thaw cycle. |

Application Details

WB:1:500~1:1000IHC:1:50~1:200ICC/IF:1:50~1:200IP:1:20

Images



Western blot analysis of MBD1 expression in HeLa cell lysate.

Product Description

Transcriptional repressor that binds CpG islands in promoters where the DNA is methylated at position 5 of cytosine within CpG dinucleotides. Binding is abolished by the presence of 7-mG that is produced by DNA damage by methylmethanesulfonate (MMS).

Note: This product is for in vitro research use only