

SH3RF2 Antibody

Catalog No: #25172

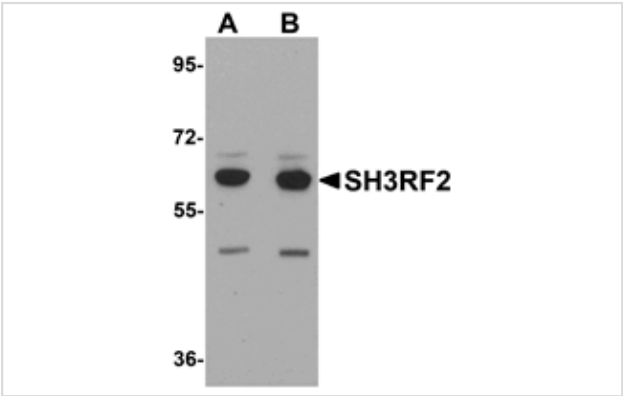


Orders: order@signalwayantibody.com
Support: tech@signalwayantibody.com

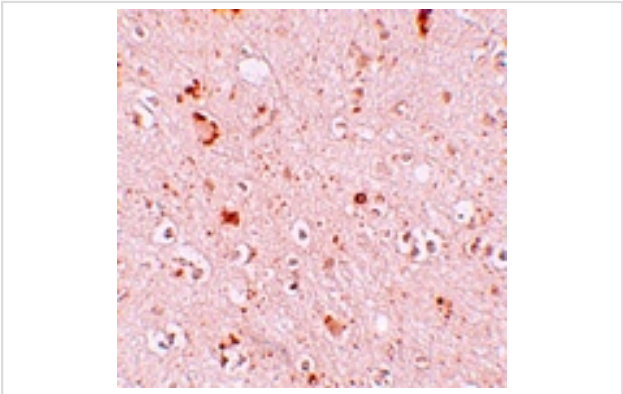
Description

Product Name	SH3RF2 Antibody
Host Species	Rabbit
Clonality	Polyclonal
Purification	Affinity chromatography purified via peptide column
Applications	ELISA WB IHC
Species Reactivity	Hu Ms Rt
Immunogen Type	Peptide
Immunogen Description	Raised against a 17 amino acid peptide near the carboxy terminus of human SH3RF2.
Target Name	SH3RF2
Other Names	SH3 domain containing ring finger 2, heart protein phosphatase 1-binding protein, Hepp1, FLJ23654
Accession No.	Swiss-Prot:Q8TEC5Gene ID:153769
Uniprot	Q8TEC5
GeneID	153769;
Concentration	1mg/ml
Formulation	Supplied in PBS containing 0.02% sodium azide.
Storage	Can be stored at -20°C, stable for one year. As with all antibodies care should be taken to avoid repeated freeze thaw cycles. Antibodies should not be exposed to prolonged high temperatures.

Images



Western blot analysis of SH3RF2 in 3T3 cell lysate with SH3RF2 antibody at (A) 1 and (B) 2 ug/mL.



Immunohistochemistry of SH3RF2 in human brain tissue with SH3RF2 antibody at 10 ug/mL.

Background

Although the SH3 domain containing ring finger 2 protein (SH3RF2) has been identified as a marker of the nucleus accumbens in the human brain, little is known about this protein. Recent yeast two-hybrid experiments have shown that SH3RF2 associates with protein phosphatase 1 (PP1) and is expressed primarily in heart and testis tissue. Recombinant SH3RF2 enhanced PP1 enzymatic activity and antagonized the ability of phospho-inhibitor-1 or -2 to inhibit PP1, suggesting that SH3RF2 may play a role working with PP1 in cardiac functions.

Note: This product is for in vitro research use only