

## Human IgG3 Rabbit mAb

Catalog No: #56251

Package Size: #56251-1 50ul #56251-2 100ul

Orders: order@signalwayantibody.com

Support: tech@signalwayantibody.com

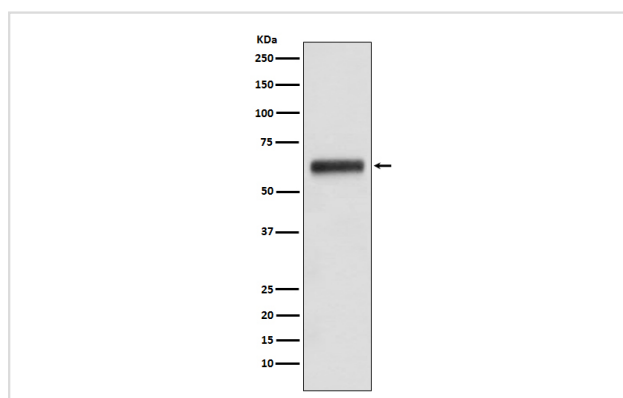
## Description

Product Name	Human IgG3 Rabbit mAb
Host Species	Rabbit
Clonality	Monoclonal
Isotype	Rabbit IgG
Purification	Affinity-chromatography
Applications	WB IP
Species Reactivity	Human
Specificity	Human IgG3 Antibody detects endogenous levels of total Human IgG3
Immunogen Description	A synthesized peptide derived from human Human IgG3
Other Names	G3m marker; HDC; Heavy chain disease protein; Ig gamma 3 chain C region; IgG3; IGHG3; IGHG3 protein;
Accession No.	Uniprot:P01860
Uniprot	P01860
Calculated MW	41kDa
Formulation	Rabbit IgG in phosphate buffered saline , pH 7.4, 150mM NaCl, 0.02% sodium azide and 50% glycerol.
Storage	Store at +4 $\Lambda$ C short term. Store at -20 $\Lambda$ C long term. Avoid freeze / thaw cycle.

## Application Details

WB:1:500~1:2000IP:1:50

## Images



Western blot analysis of Human IgG3 expression in human plasma lysate.

## Product Description

IgG is a monomeric immunoglobulin, built of two heavy chains gamma and two light chains. Each molecule has two antigen binding sites. This is the most abundant immunoglobulin and is approximately equally distributed in blood and in tissue liquids, constituting 75% of serum immunoglobulins in humans. There are 4 subclasses: IgG1 (66%), IgG2 (23%), IgG3 (7%) and IgG4 (4%).

---

Note: This product is for in vitro research use only