

# Lambda Light chain Rabbit mAb

Catalog No: #56257

Package Size: #56257-1 50ul #56257-2 100ul

Orders: [order@signalwayantibody.com](mailto:order@signalwayantibody.com)Support: [tech@signalwayantibody.com](mailto:tech@signalwayantibody.com)

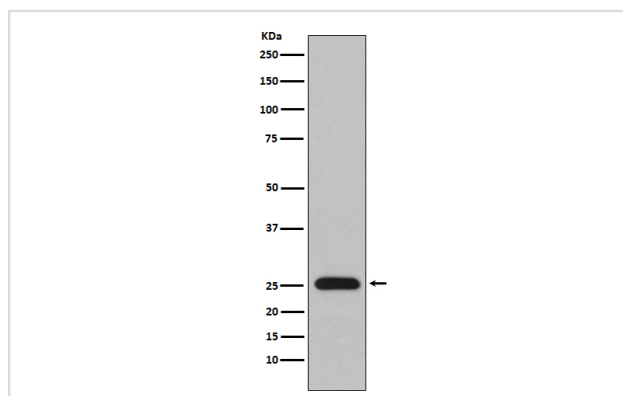
## Description

Product Name	Lambda Light chain Rabbit mAb
Host Species	Rabbit
Clonality	Monoclonal
Isotype	Rabbit IgG
Purification	Affinity-chromatography
Applications	WB IHC ICC/IF FC
Species Reactivity	Human
Specificity	Lambda Light chain Antibody detects endogenous levels of total Lambda Light chain
Immunogen Description	A synthesized peptide derived from human Lambda Light chain
Other Names	Bence Jones protein; BJP; Constant region of lambda light chains; Ig lambda chain C regions; IGLC; IGLC1; IGLC2; IGLC3; IGLC6; IGLV; Immunoglobulin lambda constant 1; Mcg marker; Paraprotein;
Accession No.	Uniprot:P01701/P01842
Uniprot	P01701/P01842
Calculated MW	25kDa
Formulation	Rabbit IgG in phosphate buffered saline , pH 7.4, 150mM NaCl, 0.02% sodium azide and 50% glycerol.
Storage	Store at +4ℳ C short term. Store at -20ℳ C long term. Avoid freeze / thaw cycle.

## Application Details

WB:1:1000~1:5000IHC:1:50~1:200ICC/IF:1:50~1:200FC:1:50

## Images



Western blot analysis of Lambda Light chain expression in human plasma lysate.

## Product Description

All five immunoglobulin classes share the same basic four polypeptide chain structure of two heavy-chains and two light chains. There are five heavy chain types, and two light-chain types (Kappa and Lambda) both having a molecular weight of 22.5kDa. Any heavy-chain type can associate with either light-chain type, but on any immunoglobulin molecule both light-chains are of the same type.

---

Note: This product is for in vitro research use only