

## RNA polymerase beta Rabbit mAb

Catalog No: #56264

Package Size: #56264-1 50ul #56264-2 100ul

Orders: [order@signalwayantibody.com](mailto:order@signalwayantibody.com)Support: [tech@signalwayantibody.com](mailto:tech@signalwayantibody.com)

## Description

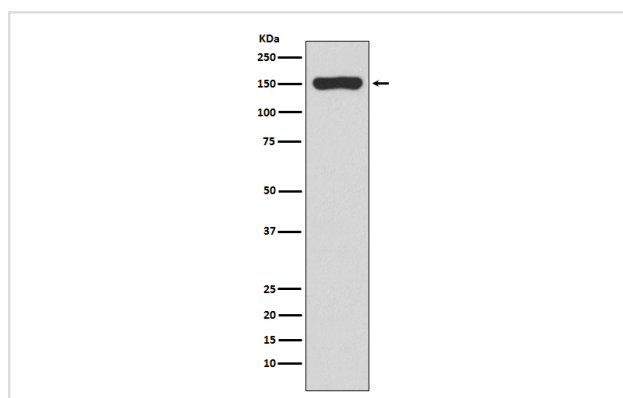
Product Name	RNA polymerase beta Rabbit mAb
Host Species	Rabbit
Clonality	Monoclonal
Isotype	Rabbit IgG
Purification	Affinity-chromatography
Applications	WB IP
Species Reactivity	Escherichia coli
Specificity	RNA polymerase beta Antibody detects endogenous levels of total RNA polymerase beta
Immunogen Description	A synthesized peptide derived from Escherichia coli RNA polymerase beta
Other Names	groN; nitB; rif; RNA pol beta; RNA polymerase subunit beta; ron; rpoB; stl; stv; tabD; Transcriptase subunit beta;
Accession No.	Uniprot:P0A8V2
Uniprot	P0A8V2
Calculated MW	150kDa
Formulation	Rabbit IgG in phosphate buffered saline , pH 7.4, 150mM NaCl, 0.02% sodium azide and 50% glycerol.
Storage	Store at +4ℳ C short term. Store at -20ℳ C long term. Avoid freeze / thaw cycle.

## Application Details

WB:1:500~1:2000

IP:1:20

## Images



Western blot analysis of RNA polymerase beta expression in E.coli lysate.

## Product Description

RNA polymerase beta (rpoB) is the  $\beta$  subunit of the bacterial RNA polymerase and is the subunit which possesses the polymerase activity. This protein is a highly conserved enzyme contained by many bacteria and has been reported as a useful marker for studies in bacterial identification and

ecology.

---

Note: This product is for in vitro research use only