

## RAP80 Rabbit mAb

Catalog No: #56276

Package Size: #56276-1 50ul #56276-2 100ul

Orders: order@signalwayantibody.com

Support: tech@signalwayantibody.com

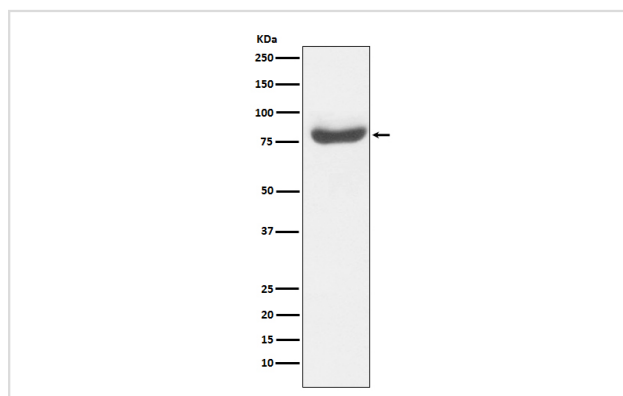
## Description

Product Name	RAP80 Rabbit mAb
Host Species	Rabbit
Clonality	Monoclonal
Isotype	Rabbit IgG
Purification	Affinity-chromatography
Applications	WB IHC ICC/IF
Species Reactivity	Human
Specificity	RAP80 Antibody detects endogenous levels of total RAP80
Immunogen Description	A synthesized peptide derived from human RAP80
Other Names	BRCA1-A complex subunit RAP80; RAP80; Receptor associated protein 80; RIP110; Rxrip110; UIMC1; X2HRIP110;
Accession No.	Uniprot:Q96RL1
Uniprot	Q96RL1
Calculated MW	80kDa
Formulation	Rabbit IgG in phosphate buffered saline , pH 7.4, 150mM NaCl, 0.02% sodium azide and 50% glycerol.
Storage	Store at +4ℳ C short term. Store at -20ℳ C long term. Avoid freeze / thaw cycle.

## Application Details

WB:1:1000~1:5000IHC:1:50~1:200ICC/IF:1:50~1:200

## Images



Western blot analysis of RAP80 expression in 293T cell lysate.

## Product Description

Ubiquitin-binding protein that specifically recognizes and binds 'Lys-63'-linked ubiquitin. Plays a central role in the BRCA1-A complex by specifically binding 'Lys-63'-linked ubiquitinated histones H2A and H2AX at DNA lesions sites, leading to target the BRCA1-BARD1 heterodimer to sites of DNA damage at double-strand breaks (DSBs).

---

Note: This product is for in vitro research use only