

## ROC1 Rabbit mAb

Catalog No: #56277

Package Size: #56277-1 50ul #56277-2 100ul

Orders: order@signalwayantibody.com

Support: tech@signalwayantibody.com

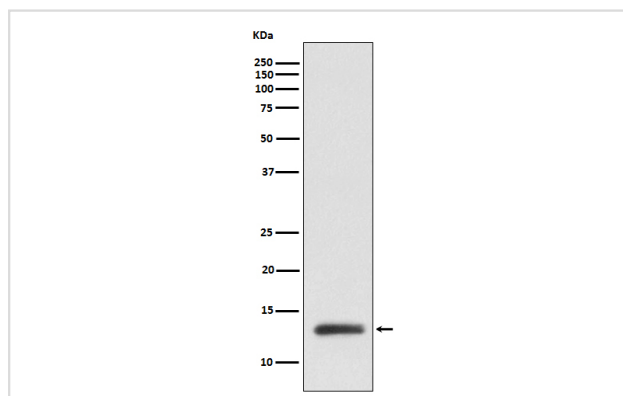
## Description

Product Name	ROC1 Rabbit mAb
Host Species	Rabbit
Clonality	Monoclonal
Isotype	Rabbit IgG
Purification	Affinity-chromatography
Applications	WB IHC ICC/IF IP FC
Species Reactivity	Human Mouse Rat
Specificity	ROC1 Antibody detects endogenous levels of total ROC1
Immunogen Description	A synthesized peptide derived from human ROC1
Other Names	BA554C12.1; MGC13357; MGC1481; RNF75; ROC1;
Accession No.	Uniprot:P62877
Uniprot	P62877
Calculated MW	12kDa
Formulation	Rabbit IgG in phosphate buffered saline , pH 7.4, 150mM NaCl, 0.02% sodium azide and 50% glycerol.
Storage	Store at +4ℳ C short term. Store at -20ℳ C long term. Avoid freeze / thaw cycle.

## Application Details

WB:1:500~1:2000IHC:1:50~1:200ICC/IF:1:50~1:200IP:1:50FC:1:100

## Images



Western blot analysis of ROC1 expression in MCF7 cell lysate.

## Product Description

E3 ubiquitin ligase component of multiple cullin-RING-based E3 ubiquitin-protein ligase complexes which mediate the ubiquitination and subsequent proteasomal degradation of target proteins, including proteins involved in cell cycle progression, signal transduction, transcription and transcription-coupled nucleotide excision repair.

---

Note: This product is for in vitro research use only