

## POMC Rabbit mAb

Catalog No: #56287

Package Size: #56287-1 50ul #56287-2 100ul

Orders: order@signalwayantibody.com

Support: tech@signalwayantibody.com

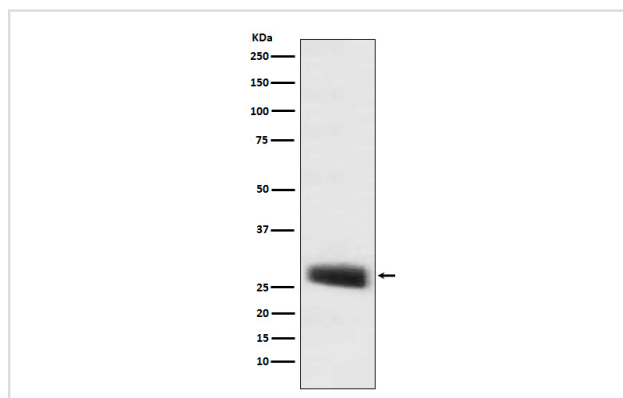
## Description

Product Name	POMC Rabbit mAb
Host Species	Rabbit
Clonality	Monoclonal
Isotype	Rabbit IgG
Purification	Affinity-chromatography
Applications	WB IHC IP
Species Reactivity	Human Mouse Rat
Specificity	POMC Antibody detects endogenous levels of total POMC
Immunogen Description	A synthesized peptide derived from human POMC
Other Names	LPH; MSH; NPP; POC; ACTH; CLIP;
Accession No.	Uniprot:P01189
Uniprot	P01189
Calculated MW	29kDa
Formulation	Rabbit IgG in phosphate buffered saline , pH 7.4, 150mM NaCl, 0.02% sodium azide and 50% glycerol.
Storage	Store at +4ℳ C short term. Store at -20ℳ C long term. Avoid freeze / thaw cycle.

## Application Details

WB:1:500~1:2000IHC:1:100~1:500IP:1:50

## Images



Western blot analysis of POMC expression in mouse pituitary lysate.

## Product Description

ACTH stimulates the adrenal glands to release cortisol. MSH (melanocyte-stimulating hormone) increases the pigmentation of skin by increasing melanin production in melanocytes. Beta-endorphin and Met-enkephalin are endogenous opiates.

---

Note: This product is for in vitro research use only