

BOB1 Rabbit mAb

Catalog No: #56290

Package Size: #56290-1 50ul #56290-2 100ul

Orders: order@signalwayantibody.com

Support: tech@signalwayantibody.com

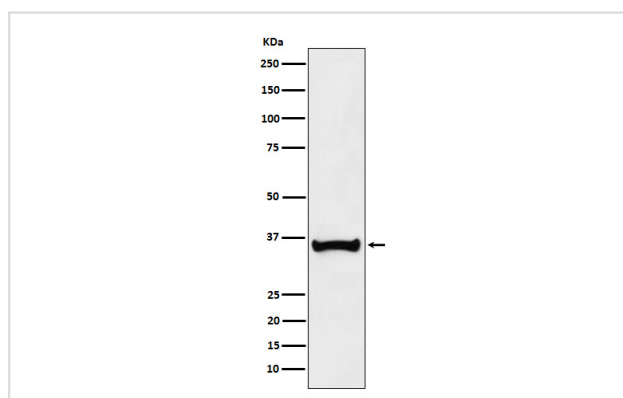
Description

Product Name	BOB1 Rabbit mAb
Host Species	Rabbit
Clonality	Monoclonal
Isotype	Rabbit IgG
Purification	Affinity-chromatography
Applications	WB IHC IP
Species Reactivity	Human
Specificity	BOB1 Antibody detects endogenous levels of total BOB1
Immunogen Description	A synthesized peptide derived from human BOB1
Other Names	BOB 1; BOB-1; OBF 1; OBF1; OCA B; OCA-B; OCAB; OCT binding factor 1; Pou2af1;
Accession No.	Uniprot:Q16633
Uniprot	Q16633
Calculated MW	35kDa
Formulation	Rabbit IgG in phosphate buffered saline , pH 7.4, 150mM NaCl, 0.02% sodium azide and 50% glycerol.
Storage	Store at +4ℳ C short term. Store at -20ℳ C long term. Avoid freeze / thaw cycle.

Application Details

WB:1:500~1:2000IHC:1:100~1:500IP:1:30

Images



Western blot analysis of BOB1 expression in Ramos cell lysate.

Product Description

Transcriptional coactivator that specifically associates with either OCT1 or OCT2. It boosts the OCT1 mediated promoter activity and to a lesser extent, that of OCT2. It has no intrinsic DNA-binding activity. It recognizes the POU domains of OCT1 and OCT2. It is essential for the response of B-cells to antigens and required for the formation of germinal centers.

Note: This product is for in vitro research use only