

TRIM25 Rabbit mAb

Catalog No: #56292

Package Size: #56292-1 50ul #56292-2 100ul

Orders: order@signalwayantibody.comSupport: tech@signalwayantibody.com

Description

Product Name	TRIM25 Rabbit mAb
Host Species	Rabbit
Clonality	Monoclonal
Isotype	Rabbit IgG
Purification	Affinity-chromatography
Applications	WB IHC ICC/IF IP FC
Species Reactivity	Human Mouse Rat
Specificity	TRIM25 Antibody detects endogenous levels of total TRIM25
Immunogen Description	A synthesized peptide derived from human TRIM25
Other Names	EFP; RNF147; TRI25; TRIM 25; Trim25; Z147; ZNF147;
Accession No.	Uniprot:Q14258
Uniprot	Q14258
Calculated MW	71kDa
Formulation	Rabbit IgG in phosphate buffered saline , pH 7.4, 150mM NaCl, 0.02% sodium azide and 50% glycerol.
Storage	Store at +4Λ C short term. Store at -20Λ C long term. Avoid freeze / thaw cycle.

Application Details

WB 1:1000-1:2000;

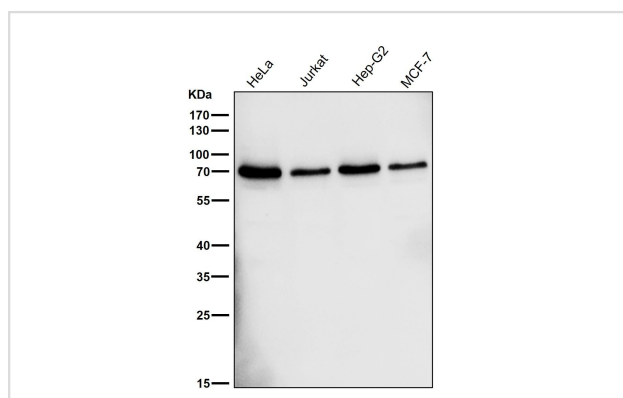
IHC 1:100-1:200oO

ICC/IF 1:50-1:200oO

IP 1:20-1:50oO

FC 1:20-1:100

Images



All lanes use the Antibody at 1:2K dilution for 1 hour at room temperature.

Product Description

Functions as an ubiquitin E3 ligase and as an ISG15 E3 ligase. Involved in innate immune defense against viruses by mediating ubiquitination of DDX58. Mediates 'Lys-63'-linked polyubiquitination of the DDX58 N-terminal CARD-like region which is crucial for triggering the cytosolic signal transduction that leads to the production of interferons in response to viral infection.

Note: This product is for in vitro research use only