

CDT2 Rabbit mAb

Catalog No: #56309

Package Size: #56309-1 50ul #56309-2 100ul

Orders: order@signalwayantibody.com

Support: tech@signalwayantibody.com

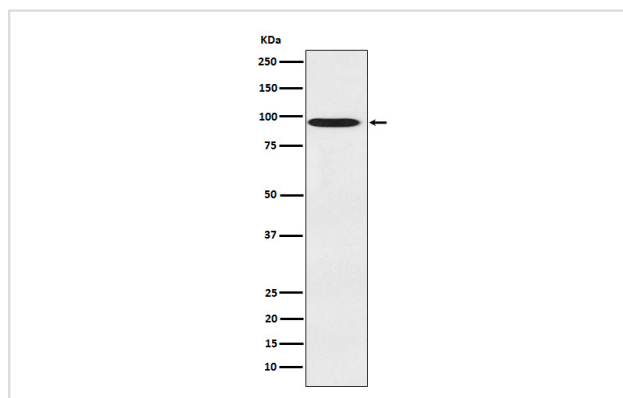
Description

Product Name	CDT2 Rabbit mAb
Host Species	Rabbit
Clonality	Monoclonal
Isotype	Rabbit IgG
Purification	Affinity-chromatography
Applications	WB IHC ICC/IF FC
Species Reactivity	Human Mouse Rat
Specificity	CDT2 Antibody detects endogenous levels of total CDT2
Immunogen Description	A synthesized peptide derived from human CDT2
Other Names	CDW1; DCAF2; Dtl; L2DTL; RAMP;
Accession No.	Uniprot:Q9NZJ0
Uniprot	Q9NZJ0
Calculated MW	91kDa
Formulation	Rabbit IgG in phosphate buffered saline , pH 7.4, 150mM NaCl, 0.02% sodium azide and 50% glycerol.
Storage	Store at +4ℳ C short term. Store at -20ℳ C long term. Avoid freeze / thaw cycle.

Application Details

WB:1:1000~1:5000IHC:1:50~1:100ICC/IF:1:50~1:100FC:1:80

Images



Western blot analysis of CDT2 expression in 293T cell lysate.

Product Description

Substrate-specific adapter of a DCX (DDB1-CUL4-X-box) E3 ubiquitin-protein ligase complex required for cell cycle control, DNA damage response and translesion DNA synthesis. The DCX(DTL) complex, also named CRL4(CDT2) complex, mediates the polyubiquitination and subsequent degradation of CDT1 and CDKN1A/p21(CIP1).

Note: This product is for in vitro research use only