

## C1QB Rabbit mAb

Catalog No: #56321

Package Size: #56321-1 50ul #56321-2 100ul

Orders: [order@signalwayantibody.com](mailto:order@signalwayantibody.com)Support: [tech@signalwayantibody.com](mailto:tech@signalwayantibody.com)

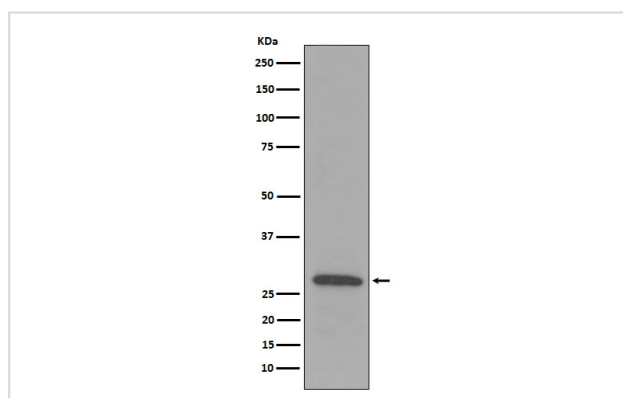
## Description

Product Name	C1QB Rabbit mAb
Host Species	Rabbit
Clonality	Monoclonal
Isotype	Rabbit IgG
Purification	Affinity-chromatography
Applications	WB IHC ICC
Species Reactivity	Human
Specificity	C1QB Antibody detects endogenous levels of total C1QB
Immunogen Description	A synthesized peptide derived from human C1QB
Other Names	C1qb; Complement component 1 q subcomponent B chain;
Accession No.	Uniprot:P02746
Uniprot	P02746
Calculated MW	26kDa
Formulation	Rabbit IgG in phosphate buffered saline , pH 7.4, 150mM NaCl, 0.02% sodium azide and 50% glycerol.
Storage	Store at +4 $\Lambda$ C short term. Store at -20 $\Lambda$ C long term. Avoid freeze / thaw cycle.

## Application Details

WB:1:500~1:2000IHC:1:50~1:200ICC:1:50~1:200

## Images



Western blot analysis of C1QB expression in Human plasma lysate.

## Product Description

C1q associates with the proenzymes C1r and C1s to yield C1, the first component of the serum complement system. The collagen-like regions of C1q interact with the Ca<sup>2+</sup>-dependent C1r2C1s2 proenzyme complex, and efficient activation of C1 takes place on interaction of the globular heads of C1q with the Fc regions of IgG or IgM antibody present in immune complexes.

---

Note: This product is for in vitro research use only