

## CD52 Rabbit mAb

Catalog No: #56323

Package Size: #56323-1 50ul #56323-2 100ul

Orders: [order@signalwayantibody.com](mailto:order@signalwayantibody.com)Support: [tech@signalwayantibody.com](mailto:tech@signalwayantibody.com)

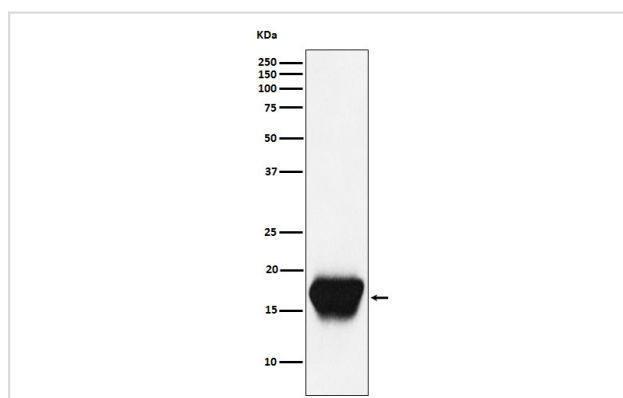
## Description

Product Name	CD52 Rabbit mAb
Host Species	Rabbit
Clonality	Monoclonal
Isotype	Rabbit IgG
Purification	Affinity-chromatography
Applications	WB IP
Species Reactivity	Mouse
Specificity	CD52 Antibody detects endogenous levels of total CD52
Immunogen Description	A synthesized peptide derived from human CD52
Other Names	CAMPATH 1; CD52; CDw52; He5;
Accession No.	Uniprot:Q64389
Uniprot	Q64389
Calculated MW	8kDa
Formulation	Rabbit IgG in phosphate buffered saline , pH 7.4, 150mM NaCl, 0.02% sodium azide and 50% glycerol.
Storage	Store at +4 $\Lambda$ C short term. Store at -20 $\Lambda$ C long term. Avoid freeze / thaw cycle.

## Application Details

WB:1:500~1:2000IP:1:50

## Images



Western blot analysis of CD52 expression in Mouse spleen cell lysate.

## Product Description

May play a role in carrying and orienting carbohydrate, as well as having a more specific role.

---

Note: This product is for in vitro research use only