

Alpha1 adaptin Rabbit mAb

Catalog No: #56328

Package Size: #56328-1 50ul #56328-2 100ul

Orders: order@signalwayantibody.com

Support: tech@signalwayantibody.com

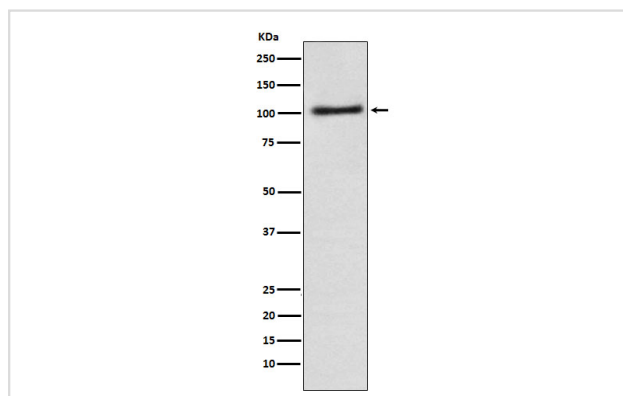
Description

Product Name	Alpha1 adaptin Rabbit mAb
Host Species	Rabbit
Clonality	Monoclonal
Isotype	Rabbit IgG
Purification	Affinity-chromatography
Applications	WB IHC ICC/IF FC
Species Reactivity	Human Mouse Rat
Specificity	Alpha1-adaptin Antibody detects endogenous levels of total Alpha1-adaptin
Immunogen Description	A synthesized peptide derived from human Alpha1-adaptin
Other Names	ADTAA; CLAPA1;
Accession No.	Uniprot:O95782
Uniprot	O95782
Calculated MW	108kDa
Formulation	Rabbit IgG in phosphate buffered saline , pH 7.4, 150mM NaCl, 0.02% sodium azide and 50% glycerol.
Storage	Store at +4ℳ C short term. Store at -20ℳ C long term. Avoid freeze / thaw cycle.

Application Details

WB:1:500~1:2000IHC:1:50~1:200ICC/IF:1:50~1:200FC:1:100

Images



Western blot analysis of Alpha1-adaptin expression in A431 cell lysate.

Product Description

Component of the adaptor protein complex 2 (AP-2). Adaptor protein complexes function in protein transport via transport vesicles in different membrane traffic pathways. Adaptor protein complexes are vesicle coat components and appear to be involved in cargo selection and vesicle formation.

Note: This product is for in vitro research use only