

## CD2 Rabbit mAb

Catalog No: #56341

Package Size: #56341-1 50ul #56341-2 100ul

Orders: order@signalwayantibody.com

Support: tech@signalwayantibody.com

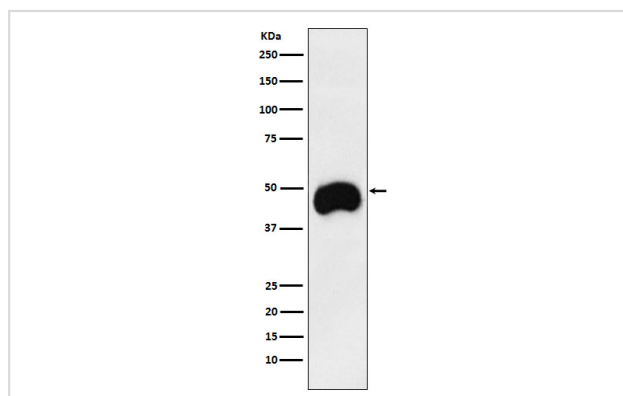
## Description

Product Name	CD2 Rabbit mAb
Host Species	Rabbit
Clonality	Monoclonal
Clone No.	SR1827
Isotype	Rabbit IgG
Purification	Affinity-chromatography
Applications	WB IHC ICC/IF IP FC
Species Reactivity	Human
Specificity	CD2 Antibody detects endogenous levels of total CD2
Immunogen Description	A synthesized peptide derived from human CD2
Other Names	CD2; LFA2; LFA3 receptor; Ly-37; SRBC; T11;
Accession No.	Uniprot:P06729
Uniprot	P06729
Calculated MW	48kDa
Formulation	Rabbit IgG in phosphate buffered saline , pH 7.4, 150mM NaCl, 0.02% sodium azide and 50% glycerol.
Storage	Store at +4ℳ C short term. Store at -20ℳ C long term. Avoid freeze / thaw cycle.

## Application Details

WB:1:500~1:2000IHC:1:50~1:200ICC/IF:1:50~1:200IP:1:50FC:1:30

## Images



Western blot analysis of CD2 expression in Jurkat cell lysate.

## Product Description

CD2 interacts with lymphocyte function-associated antigen (LFA-3) and CD48/BCM1 to mediate adhesion between T-cells and other cell types. CD2 is implicated in the triggering of T-cells, the cytoplasmic domain is implicated in the signaling function.

---

Note: This product is for in vitro research use only