

Placental lactogen Rabbit mAb

Catalog No: #56394

Package Size: #56394-1 50ul #56394-2 100ul

Orders: order@signalwayantibody.comSupport: tech@signalwayantibody.com

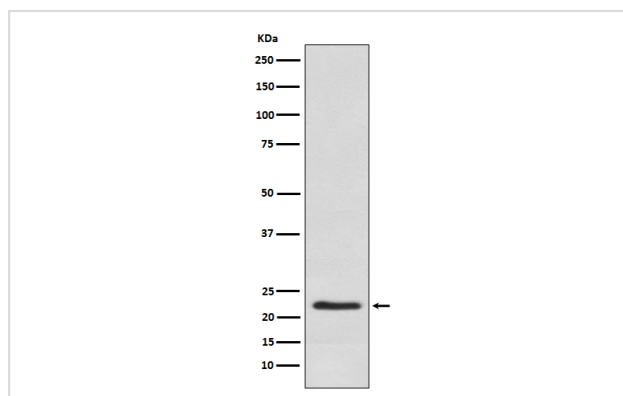
Description

Product Name	Placental lactogen Rabbit mAb
Host Species	Rabbit
Clonality	Monoclonal
Isotype	Rabbit IgG
Purification	Affinity-chromatography
Applications	WB IHC IP
Species Reactivity	Human
Specificity	Placental lactogen Antibody detects endogenous levels of total Placental lactogen
Immunogen Description	A synthesized peptide derived from human Placental lactogen
Other Names	CS2; CSA; CSB; CSH1; CSH2; CSMT; hCS; HCSB; Lactogen; mpll; PL; PI2; Placental lactogen; Placental lactogen II; Prl3b1; Prolactin 3B1; rPLII;
Accession No.	Uniprot:P01243/P0DML2/P0DML3
Uniprot	P01243/P0DML2/P0DML3
Calculated MW	25kDa
Formulation	Rabbit IgG in phosphate buffered saline , pH 7.4, 150mM NaCl, 0.02% sodium azide and 50% glycerol.
Storage	Store at +4 $^{\circ}$ C short term. Store at -20 $^{\circ}$ C long term. Avoid freeze / thaw cycle.

Application Details

WB:1:1000~1:5000IHC:1:50~1:200IP:1:50

Images



Western blot analysis of Placental lactogen expression in Human placenta lysate.

Product Description

Produced only during pregnancy and is involved in stimulating lactation, fetal growth and metabolism. Does not interact with GHR but only activates PRLR through zinc-induced dimerization.

Note: This product is for in vitro research use only