

ALK Rabbit mAb

Catalog No: #56402

Package Size: #56402-1 50ul #56402-2 100ul

Orders: order@signalwayantibody.comSupport: tech@signalwayantibody.com

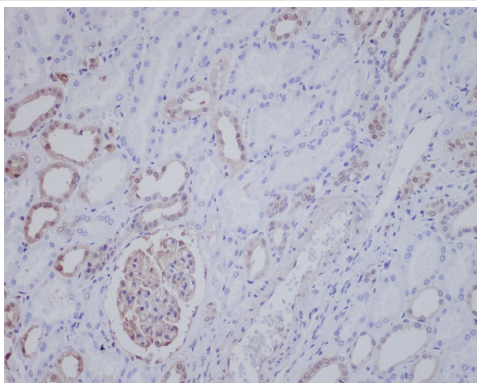
Description

Product Name	ALK Rabbit mAb
Host Species	Rabbit
Clonality	Monoclonal
Isotype	Rabbit IgG
Purification	Affinity-chromatography
Applications	IHC ICC/IF
Species Reactivity	Human Mouse Rat
Specificity	ALK Antibody detects endogenous levels of total ALK
Immunogen Description	A synthesized peptide derived from human ALK
Other Names	ALK tyrosine kinase receptor; Nucleophosmin; NPM1; ALK; NPM-ALK
Accession No.	Uniprot:Q9UM73
Uniprot	Q9UM73
Calculated MW	kDa
Formulation	Rabbit IgG in phosphate buffered saline , pH 7.4, 150mM NaCl, 0.02% sodium azide and 50% glycerol.
Storage	Store at -20°C for long term preservation (recommended). Store at 4°C for short term use.

Application Details

IHC:1:100~1:500ICC/IF:1:50~1:100

Images



Immunohistochemical analysis of paraffin-embedded human kidney, using ALK Antibody.

Product Description

Involved in diverse cellular processes such as ribosome biogenesis, centrosome duplication, protein chaperoning, histone assembly, cell proliferation, and regulation of tumor suppressors p53/TP53 and ARF. Binds ribosome presumably to drive ribosome nuclear export. Associated with nucleolar ribonucleoprotein structures and bind single-stranded nucleic acids.

Note: This product is for in vitro research use only