

IL23 Rabbit mAb

Catalog No: #56416

Package Size: #56416-1 50ul #56416-2 100ul

Orders: order@signalwayantibody.comSupport: tech@signalwayantibody.com

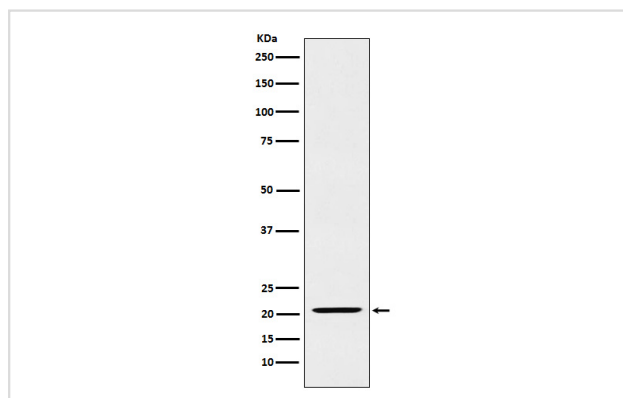
Description

Product Name	IL23 Rabbit mAb
Host Species	Rabbit
Clonality	Monoclonal
Isotype	Rabbit IgG
Purification	Affinity-chromatography
Applications	WB
Species Reactivity	Human
Specificity	IL23 Antibody detects endogenous levels of total IL23
Immunogen Description	A synthesized peptide derived from human IL23
Other Names	IL 23A; IL 23p19; IL12B; IL23; IL23a; IL23P19; P19; SGRF;
Accession No.	Uniprot:Q9NPF7
Uniprot	Q9NPF7
Calculated MW	21kDa
Formulation	Rabbit IgG in phosphate buffered saline , pH 7.4, 150mM NaCl, 0.02% sodium azide and 50% glycerol.
Storage	Store at +4 Λ C short term. Store at -20 Λ C long term. Avoid freeze / thaw cycle.

Application Details

WB:1:500~1:1000

Images



Western blot analysis of IL23 expression in Raji cell lysate.

Product Description

Associates with IL12B to form the IL-23 interleukin, an heterodimeric cytokine which functions in innate and adaptive immunity. IL-23 may constitute with IL-17 an acute response to infection in peripheral tissues. IL-23 binds to an heterodimeric receptor complex composed of IL12RB1 and IL23R, activates the Jak-Stat signaling cascade, stimulates memory rather than naive T-cells and promotes production of proinflammatory cytokines.

Note: This product is for in vitro research use only