

## GluR2+GluR3 Rabbit mAb

Catalog No: #56419

Package Size: #56419-1 50ul #56419-2 100ul

Orders: order@signalwayantibody.com

Support: tech@signalwayantibody.com

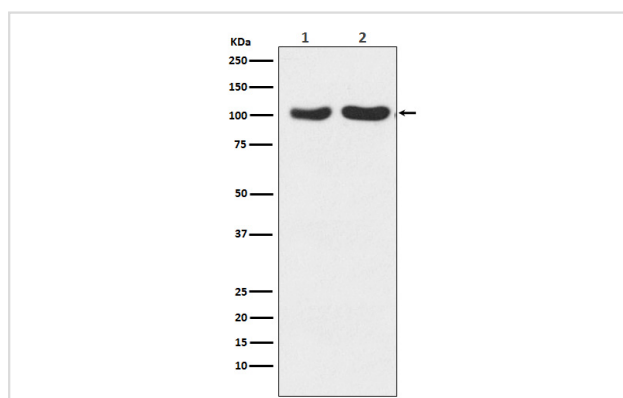
## Description

Product Name	GluR2+GluR3 Rabbit mAb
Host Species	Rabbit
Clonality	Monoclonal
Isotype	Rabbit IgG
Purification	Affinity-chromatography
Applications	WB IP
Species Reactivity	Human Mouse Rat
Specificity	GluR2+GluR3 Antibody detects endogenous levels of total GluR2+GluR3
Immunogen Description	A synthesized peptide derived from human GluR2+GluR3
Other Names	GluR K2; GluR K3; GLURB; GLURC; GRIA2; GRIA3;
Accession No.	Uniprot:P42262/P42263
Uniprot	P42262/P42263
Calculated MW	98kDa
Formulation	Rabbit IgG in phosphate buffered saline , pH 7.4, 150mM NaCl, 0.02% sodium azide and 50% glycerol.
Storage	Store at +4ℳ C short term. Store at -20ℳ C long term. Avoid freeze / thaw cycle.

## Application Details

WB:1:500~1:2000IP:1:100

## Images



Western blot analysis of GluR2+GluR3 expression in (1) Human fetal brain lysate; (2) Mouse brain lysate.

## Product Description

Ion channels activated by glutamate are typically divided into two classes. Those sensitive to N-methyl-D-aspartate (NMDA) are designated NMDA receptors (NMDAR) while those activated by α-amino-3-hydroxy-5-methyl-4-isoxalone propionic acid (AMPA) are known as AMPA receptors (AMPA).

---

Note: This product is for in vitro research use only